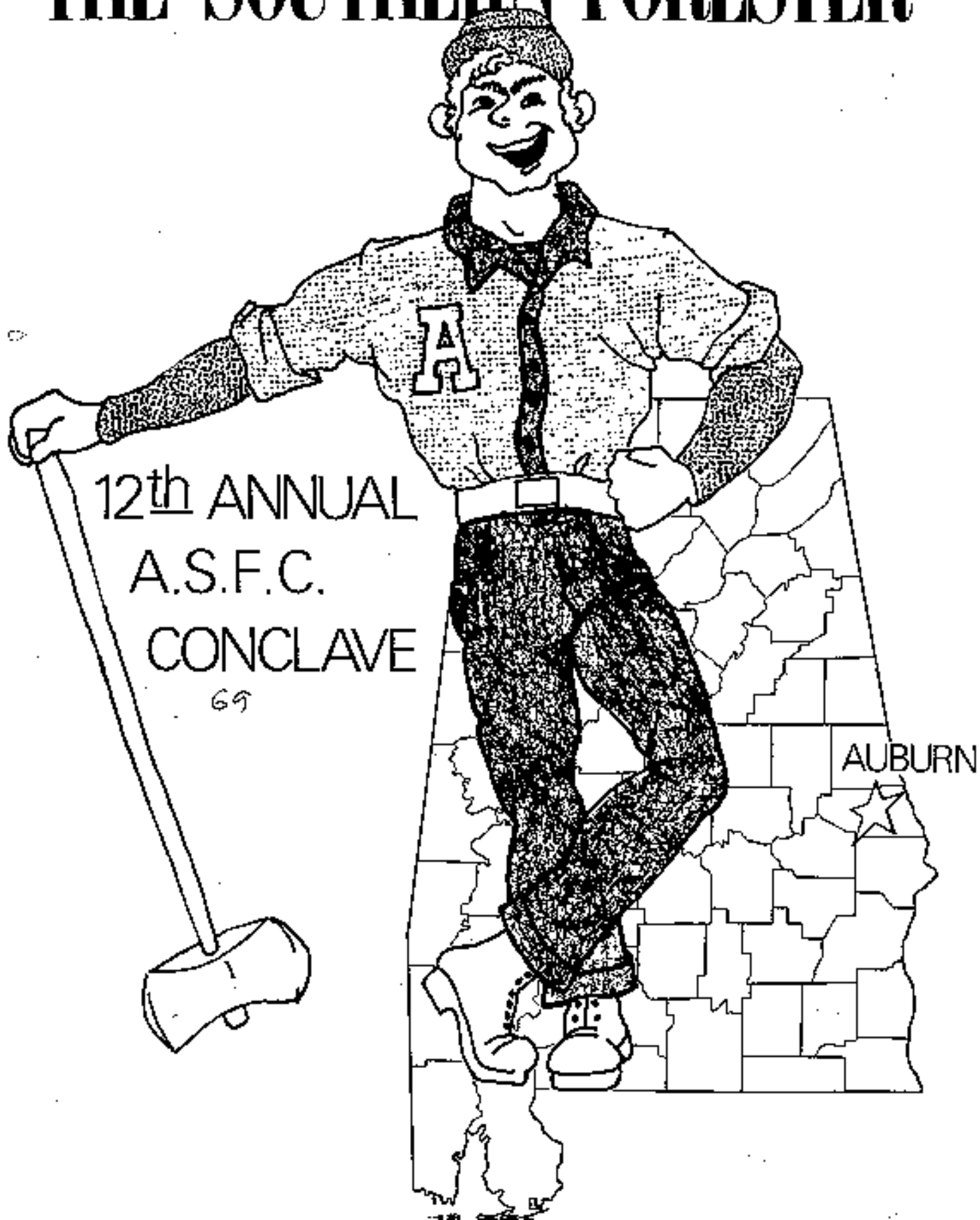


THE SOUTHERN FORESTER



12th ANNUAL
A.S.F.C.
CONCLAVE

69

AUBURN

The Auburn University

Forestry Club Presents

The 12th Annual

A.S.F.C. CONCLAVE

FOR

1969

Editor. David M. Simmons

Photographer, Art & Design. . . Charles W. Lokey, III

TABLE OF CONTENTS

Financial Report.	2
Scores and Final Standings.	3
The Presidents Speaks	4
ASFC Officers	4
Conclave Events	5-9
Pictures of the Clubs	10-15
Articles of the Clubs	16-22
Business Meeting.	23
Constitution.	24-28
Advertisizing	

FINANCIAL STATEMENT

Income

Contributing and Advertising	\$ 620.00
Conclave Dues	1035.00
Registration and Banquet Money	1650.50
	<u>\$3305.50</u>

Expense

Correspondence and Postage	\$ 87.75
Food	1722.85
Conference Fees	172.50
Insurance	209.90
Trophies	309.57
Southern Forester	415.73
Miscellaneous	23.77
Conclave Event Expenses	<u>363.43</u>
	<u>\$3305.50</u>

John C. Welker
Treasurer, ASFC

	SKILL EVENTS											TOTAL	PLACE	
	Knife Throwing	Axe Throwing	Box Sawing	Cross-Cut Sawing	Pole Climbing	Log Burying	Batt Casting	Log Rolling	Chain Throwing	Log Chopping	Pole Relling			
Arkansas A&M	10	9	8	9	11	11	10	11	9	11	10	10	109	1
Auburn	5	10	10	3	8	14	11	0	10	4	7	69	3	
Clemson	2	3 1/2	5	5	2	7	7	4	2 1/2	2	6	46	11	
Florida	5	3 1/2	0	6	7	9	2	8	5	3	8	56	8	
Georgia	5	3 1/2	2	2	6	7	9	5	7	5	5	56	8	
MSU	9	8	3	1	---	1 1/2	8	7	2 1/2	---	11	51	10	
NCS	1	6 1/2	11	10	9	5	1	0	4	10	1	58	6	
Oklahoma	11	11	9	11	3	3 1/2	5	9	8	9	9	88	2	
S. F. Austin	5	3 1/2	7	8	10	3 1/2	4	6	11	6	2	66	4	
Tennessee	8	1	4	7	5	7	3	10	0	8	4	57	7	
V.P.I.	5	6 1/2	6	4	4	10	6	3	6	7	3	60	5	

	TECHNICAL EVENTS								TOTAL	PLACE	GRAND TOTAL	OVERALL PLACE
	D.B.H. Estimation	Timber Estimation	Pole Class.	Compass & Pace	Wood Technology	Dendrology	TOTAL	PLACE				
Arkansas A&M	16 1/2	9	15	13 1/2	6	15	75	1	18 1/2	1		
Auburn	6	4 1/2	16 1/2	15	15	16 1/2	73 1/2	2	14 1/2	2		
Clemson	1 1/2	12	9 3/4	10 1/2	11 1/2	7 1/2	52 1/2	5	98 1/2	10		
Florida	12	7 1/2	9 3/4	12	9	14	51 1/2	6	108 1/2	7		
Georgia	13 1/2	15	3	7 1/2	1 1/2	9	49 1/2	7	106	8		
MSU	10 1/2	6	4 1/2	6	6	10 1/2	43 1/2	10	94 1/2	11		
NCS	4 1/2	3	13 1/2	3	11 1/2	12	47 1/2	9	105 1/2	9		
Oklahoma	7 1/2	16 1/2	7 1/2	1 1/2	3	3	39	11	127 1/2	3		
S. F. Austin	15	1 1/2	1 1/2	9	16 1/2	6	49 1/2	7	115 1/2	5		
Tennessee	3	10 1/2	12	4 1/2	13 1/2	13 1/2	57	3	114	6		
V.P.I.	9	13 1/2	6	16 1/2	6	4 1/2	55 1/2	4	116	4		

THE PRESIDENT SPEAK'S

As I begin to write this article for the Southern Forester, my thoughts go back to Georgia in 1967, Clemson in 1968, and finally to Auburn in 1969. I must say I have had many experiences in my three years of Conclave participation, but the year of 1969 was a year that cannot be forgotten. The hosting of the 12th Annual Conclave was a task and experience that the Auburn Forestry Club truly enjoyed.

Though plans for the Conclave began a year in advance, the closer April 12, 1969 came, the more work there was to be done. I would like to thank the active members of the AU Forestry Club, who deserve the credit for the success of the Conclave, for their support and help.

A big help by his guidance, support and cooperation was Dr. L. Earl DeBrunner, the Club Advisor. His foresight of many potential problems before they occurred was a lifesaver in many instances.

Also a big help were the Secretaries of the Department of Forestry. Their help in correspondence and in the organizing of the Southern Forester was unsurpassable.

I would like to thank each of you for your compliments on the Conclave. The success that we feel is in knowing that you contributed to and enjoyed the Conclave.

We wish the best of luck to VPI in hosting the 13th Annual Conclave. Their task will not be easy, ours wasn't, but it is worthwhile and rewarding.

Thomas W. Fell, Jr.
President, ASFC

OFFICERS OF THE ASSOCIATION OF SOUTHERN FORESTRY CLUBS

Thomas W. Fell, Jr. President
Harry G. Prince, Jr. Vice-President
Gary L. Hsae Secretary
John C. Welker Treasurer
David M. Simmons Editor

conclave events



LOG BURLING

School	Contestant	Place
Arkansas	Hawkins	1
V.P.I.	Olah	2
Florida	Vogel	3
Clemson	Counts	4
Georgia	Arndt	4
Tennessee	Capen	4
N.C. State	Goffin	7
Oklahoma	Goodale	8
S.F. Austin	Farmer	8
Auburn	Cumbie	10
Miss. State	Anderson	10

LOG CHOPPING

School	Contestant	Place
Arkansas	Hawkins	1
N.C. State	Coggins	2
Oklahoma	Barber	3
Tennessee	Ragain	4
V.P.I.	Nemore	5
S.F. Austin	Moody	6
Georgia	Bowling	7
Auburn	Jaggers	8
Florida	Wood	9
Clemson	Little	10
Miss. State	-	-



LOG ROLLING

School	Contestant	Place
Arkansas	Hardcastle & Brumbelow	1
Tennessee	Nanney & Bell	2
Oklahoma	Baker & Hunkerpillar	3
Florida	Vogel & Hollifield	4
Miss. State	Smith & Smith	5
S.F. Austin	Comingham & Avery	6
Georgia	Ainchum & Butler	7
Clemson	Lawson & Cloniger	8
V.P.I.	Woodson & Crowder	9
Auburn	Welker & Beasley	0
N.C. State	Coggins & Botkins	0

conclave events



AXE THROWING

School	Contestant	Place
Oklahoma	Swords	1
Auburn	Jagers	2
Arkansas	Thornton	3
Miss. State	Warren	4
N.C. State	Coffin	5
V.P.I.	Cairo	5
Clemson	Brockenfelt	7
Florida	Leclerg	7
Georgia	Jones	7
S.F. Austin	Hawley	7
Tennessee	Williams	11

BAIT CASTING

School	Contestant	Place
Auburn	Bacon	1
Arkansas	Langford	2
Georgia	Dowling	3
Miss. State	Smith	4
Clemson	Mitsman	5
V.P.I.	Woodson	6
Oklahoma	Abbott	7
S.F. Austin	McKee	8
Tennessee	Riddell	9
Florida	York	10
N.C. State	Naylor	11



BOW SAWING

School	Contestant	Place
N.C. State	Kmet	1
Auburn	Tarleton	2
Oklahoma	Franklin	3
Arkansas	Willet	4
S.F. Austin	Hill	5
V.P.I.	Reay	6
Clemson	Bass	7
Tennessee	Rickman	8
Miss. State	Foster	9
Georgia	Fordham	10
Florida	Hohmann	11

conclave events



CHAIN THROWING

School	Contestant	Place
S.F. Austin	Hawley	1
Auburn	Prince	2
Arkansas	Green	3
Oklahoma	Cheek	4
Georgia	Dulinawka	5
V.P.I.	Spitzner	6
Florida	Smith	7
N.C. State	Sitts	8
Clemson	Stewart	9
Miss. State	Anderson	10
Tennessee	Taft	11

CROSS-CUT SAWING

School	Contestants	Place
Oklahoma	Franklin & Baker	1
N.C. State	Folk & Johnson	2
Arkansas	Dishough & Brumbelow	3
S.F. Austin	Hill & Behrens	4
Tennessee	Flynn & Taft	5
Florida	Holifield & Wood	6
Clemson	Forbes & Sibley	7
V.P.I.	Spitzner & Olah	8
Auburn	Simmons & McDonald	9
Georgia	McKenner & Butler	10
Miss. State	Smith & Black	11



KNIFE THROWING

School	Contestant	Place
Oklahoma	Swords	1
Arkansas	Meyer	2
Miss. State	Warren	3
Tennessee	Lane	4
Auburn	Ratley	5
Florida	Barton	5
Georgia	Cabe	5
S.F. Austin	Bintliff	5
V.P.I.	Smith	5
Clemson	Trythall	10
N.C. State	Stephens	11

conclave events



POLE CLIMBING

School	Contestant	Place
Arkansas	Lovett	1
S.F. Austin	Farmer	2
N.C. State	Knowlton	3
Auburn	Blocker	4
Florida	Poole	5
Georgia	Arndt	6
Tennessee	Evans	7
V.P.I.	Simpkins	8
Oklahoma	Balchelder	9
Clemson	Henrikseu	10
Miss. State	-	11

POLE FELLING

School	Contestant	Place
Miss. State	Black	1
Arkansas	Dishongh	2
Oklahoma	London	3
Florida	Leelerg	4
Auburn	Grable	5
Clemson	Patterson	6
Georgia	Dowling	7
Tennessee	Forester	8
V.P.I.	Beale	9
S.F. Austin	Avery	10
N.C. State	Rodgers	11

PICTURE NOT AVAILABLE

technical events

DENDROLOGY

<u>School</u>	<u>Contestant</u>	<u>Place</u>
Auburn	Boldrick	1
Arkansas	Green	2
Tennessee	Campbell	3
N.C. State	Schmidt	4
Miss. State	Shelton	5
Georgia	Hill	6
Clemson	Sullock	7
S.F. Austin	Williamson	8
VPI	Akers	9
Oklahoma	Abbott	10
Florida	Gillmore	11

TIMBER ESTIMATION

<u>School</u>	<u>Contestant</u>	<u>Place</u>
Oklahoma	Huff	1
Georgia	Koulianos	2
VPI	Myers	3
Clemson	Tompkins	4
Tennessee	Ragain	5
Arkansas	Burford	6
Florida	Lewis	7
Miss. State	Anderson	8
Auburn	Sanderson	9
N.C. State	Liles	10
S.F. Austin	Sandeen	11

D.B.H. ESTIMATION

<u>School</u>	<u>Contestant</u>	<u>Place</u>
Arkansas	Keller	1
S.F. Austin	Hawley	2
Georgia	Arndt	3
Florida	Lewis	4
Miss. State	Smith	5
VPI	Olah	6
Oklahoma	Smith	7
Auburn	Conway	8
N.C. State	Collette	9
Tennessee	Clevio	10
Clemson	Wall	11

POLE CLASSIFICATION

<u>School</u>	<u>Contestant</u>	<u>Place</u>
Auburn	Fell	1
Arkansas	Green	2
N.C. State	Dozier	3
Tennessee	Nichols	4
Clemson	Holcombe	5
Florida	Bordyn	5
Oklahoma	Pierce	7
VPI	Venks	8
Miss. State	Smith	9
Georgia	Holbrook	10
S.F. Austin	Sandeen	11

COMPASS AND PACING

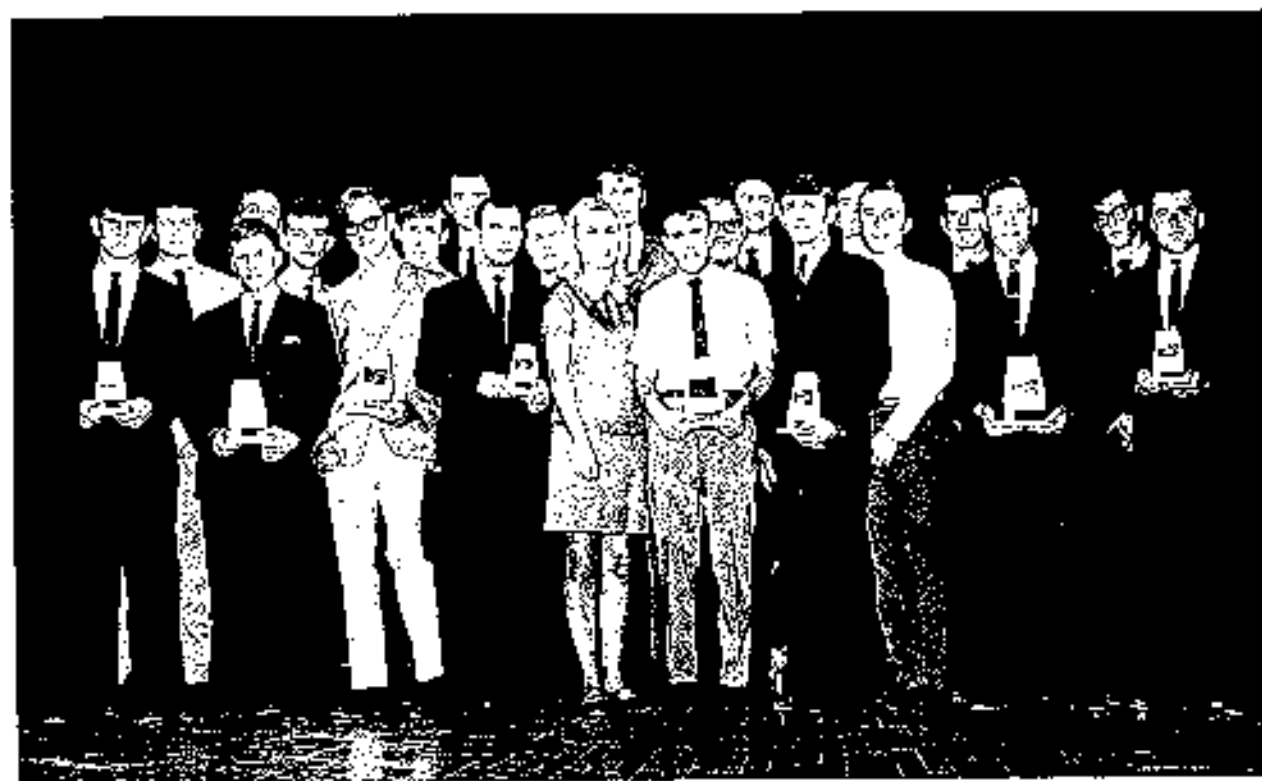
<u>School</u>	<u>Contestant</u>	<u>Place</u>
VPI	Myers	1
Auburn	Ratley	2
Arkansas	Rhodes	3
Florida	Hohmann	4
Clemson	Walden	5
S.F. Austin	Hawley	6
Georgia	Cohen	7
Miss. State	Black	8
Tennessee	Kadden	9
N.C. State	Hauskencht	10
Oklahoma	Swords	11

WOOD TECHNOLOGY

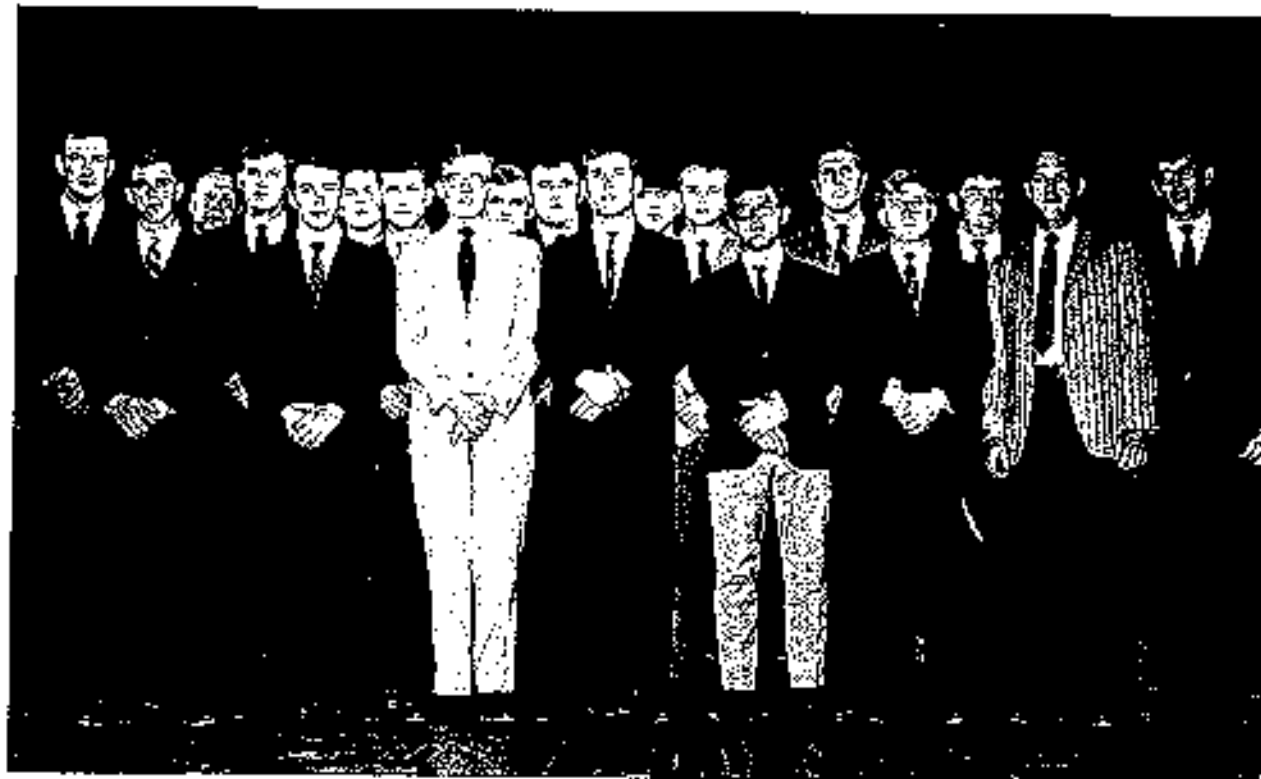
<u>School</u>	<u>Contestant</u>	<u>Place</u>
S.F. Austin	Moody	1
Auburn	Boldrick	2
Tennessee	Barnett	3
Clemson	Wall	4
N.C. State	Lee	5
Florida	Armstrong	6
Arkansas	Brumbelow	7
Miss. State	Baughman	7
VPI	Green	7
Oklahoma	Kunka	10
Georgia	Jones	11



THE ARKANSAS A & M FORESTRY CLUB



THE AUBURN FORESTRY CLUB



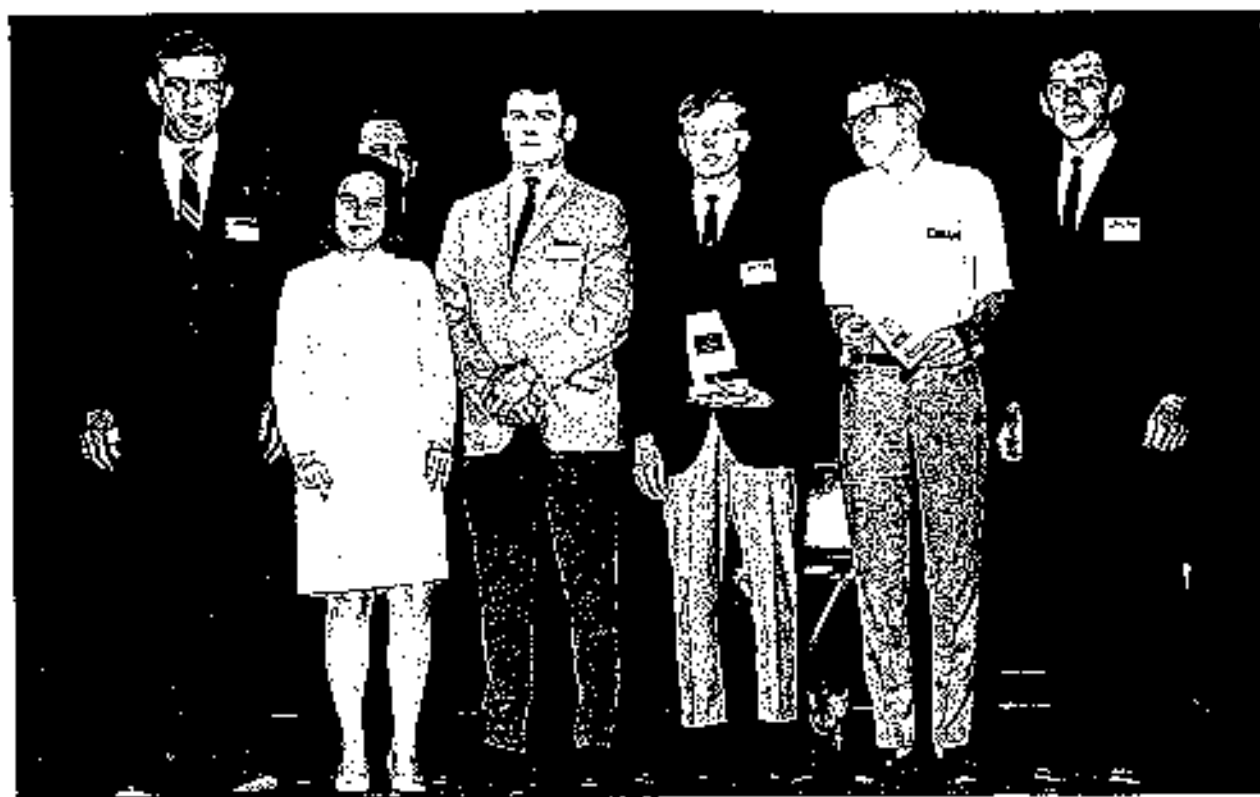
THE CLEMSON UNIVERSITY FORESTRY CLUB



THE UNIVERSITY OF FLORIDA FORESTRY CLUB



THE UNIVERSITY OF GEORGIA FORESTRY CLUB



THE MISSISSIPPI STATE FORESTRY CLUB



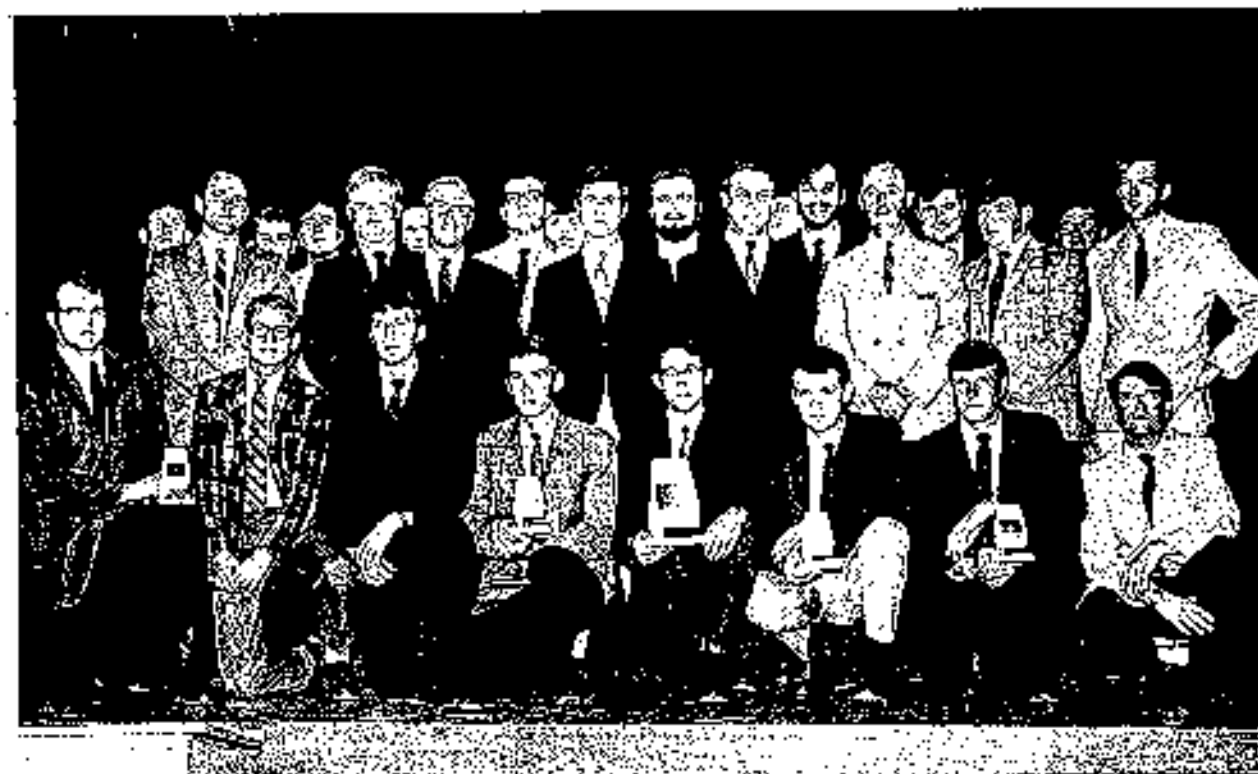
THE NORTH CAROLINA STATE FORESTRY CLUB



THE OKLAHOMA STATE FORESTRY CLUB



THE SYLVANS CLUB
Stephen F. Austin State College



THE UNIVERSITY OF TENNESSEE FORESTRY CLUB



THE VPI FORESTRY CLUB

THE ARKANSAS A&M FORESTRY CLUB

by Bob Burford

The Arkansas A&M Forestry Club is one of the largest and most active organizations on campus.

Our club won first place in the Annual Homecoming Decoration contest this year and also has one of the top intramural teams.

This year's fund raising activities consisted mainly of selling programs at football games and operating the concession stand at the Student Government sponsored dances.

The club holds bi-monthly meetings, which consist of business sessions and special programs of outdoor films and guest speakers. These speakers are of the forestry field or closely related fields of interest. Other than these bi-monthly meetings, the club holds two socials and a banquet each year. At our annual banquet we review the past year's achievements and present the scholarship awards. The club sponsors two scholarship awards and one leadership award. These awards are presented to the outstanding members of the Junior and Senior classes.

We are very proud of our club and feel that it is one of the best ways of promoting scholarship, leadership, and most of all fellowship within our Forestry School.

THE AUBURN FORESTRY CLUB

by Thomas W. Fell, Jr.

To start the entering freshmen on the right path, the Forestry Club holds a freshman orientation program at the beginning of each Fall Quarter to give the freshmen an idea of what to expect during their college career. The club also participates in the Forestry Convocations that are held twice each quarter to keep the students up-to-date on the latest developments in forestry and also to allow a closer association among student and faculty. An annual Forestry Newsletter, financed by the Forestry Alumni Association, publishes articles written by students and members of the staff and is sent to each forestry student and alumnus.

The money-making projects are aimed at financing the social events of the club. This begins with the fall football season and the selling of programs and "Nutty War Eagles". The "Nutty War Eagle is an Auburn souvenir produced exclusively by the Forestry Club. The club also sells firewood during the fire-place season to fraternities and residents of the Auburn area.

Twice each year in the fall and spring, the club holds a Wood-chopper's Ball. At this function a picnic is held, and then a time for dancing, sing-alone, etc., is provided. Usually some type of wild game is barbequed and available for all who so desire. The Forestry Club is also privileged to conduct a banquet each winter quarter at which time Department and Alumni Awards are presented. The awards given included "Outstanding Senior", "Most Improved Grades" and "Most Consistent Grades".

THE CLEMSON UNIVERSITY FORESTRY CLUB

by Dwight L. Stewart, Jr.

The Clemson University Forestry Club is very active during the fall and spring semesters. Activities include the cutting and selling of fire-wood and pulpwood, and the patrolling of the Clemson Forests in coordination with other University agencies' efforts to control forest fires. During the fall semester, we were employed by several homeowners to remove unwanted trees from their yards. The Club also enters a display in the University Homecoming, and usually wins first or second prize. We also enjoy several cookouts throughout both semesters.

The members feel that the Forestry Club is a very important part of the forestry curriculum at Clemson, and everyone enjoys the activities of the Club.

THE UNIVERSITY OF FLORIDA FORESTRY CLUB

by Sam Poole

This past year has been richly rewarding in both experience and enjoyment for the University of Florida Forestry Club. Our activities have included intramural football, cookouts at our 2000 acre school forest, our fund-raising pulpwood cut (33 cords) and Field Day, as well as our upcoming annual banquet to honor seniors and award winners. Speakers at our bi-monthly meetings have given our growing membership keen insights into the profession of forestry and its related fields. These meetings have also given each of us the opportunity to know personally one of our most dedicated members, John Oray, Director of the University of Florida School of Forestry.

Our club is now looking forward to this conclave at Auburn and to an even more active role both in our school and on our campus.

THE UNIVERSITY OF GEORGIA FORESTRY CLUB

On February 4, 1914, with Professor Alfred Akerman as chairman, the seven students then attending the George Foster Peabody School of Forestry, University of Georgia, met to establish the Forestry Club. Though small in number, their efforts and enthusiasm growth and characteristic activity in the club and the years found more and more southern youths bringing their ideas and abilities into the club. By the academic year 1948-49 the club's membership had grown to an all time high of 180.

The school is proud to have hosted the first Annual Conclave of Southeastern Forestry Schools held on May 10, 1958. Since then, UGA has continued to send her Forestry students to this yearly event in hopes of achieving social and academic enrichment through co-operative effort. Other traditional, yearly activities of the club include the Lumberjack Ball and Field Day weekend, The Cypress Knee Annual Publication, Spring Awards Banquet, Outstanding Freshman of the Year Award and the Natural Science Award at the Ga. State Science Fair.

The Club holds bi-monthly meetings where the activities are discussed and administered. Officers are elected on a yearly basis. The club is currently under the leadership of Mitchell Flinchum, President; Don Rogers, Vice President; Robert Siler, Secretary; Pat Adams, Treasurer; and Charles Gresham, Parliamentarian.

The club has taken an active position among the other clubs and organizations on campus in the areas of Student Government and Intramural sports. The School of Forest Resources now has an enrollment of about 350 undergraduates and also encompasses a number in post graduate studies at the school.

THE MISSISSIPPI STATE UNIVERSITY FORESTRY CLUB

Being an accredited Forestry School and having an enrollment of some 160 we have many activities throughout the year. The Forestry Club has such things as a fire wood cut in the fall, a Pulpwood cut in the spring which come off the thinning of a 20 acre Slash plantation managed by the Forestry Club, and suppers to finance the club. In the Fall of every year we hold a Field Day to determine who will participate in the Conclaves. In our Forestry Club meetings, which are held twice a month, we have persons from the different Forestry organizations such as Miss. Forestry Commission, and the Forestry Service. These speakers give the students an opportunity to learn more about the advantages of each phase of Forestry. We believe that by active participation in the Forestry School and Club makes for a deeper concern in Forestry.

THE NORTH CAROLINA STATE UNIVERSITY FORESTRY CLUB

by David L. Smith

This year was the 40th year of forestry at N.C. State. It has been a year of growth, development, and enthusiasm for both the School and the Club. Our new School of Forest Resources building was started and upon its completion all the forestry related schools will be located together rather than across the campus from each other.

The Forestry Club this year has seen a good deal of freshman enthusiasm, something that is a rare and welcome sight. We hope this enthusiasm will be contagious and spread through the existing classes and the incoming ones. Their spirit paid off in our annual Rolleo held in November. They won third place overall, but they were only 6 points out of first!

The Club participated in several campus activities. Our entry in the Homecoming float contest won 2nd place. Our annual Rolleo, mentioned above, was one of the best ever; competition was keen and attendance was high.

Our money-making projects this year consisted of firewood sales in the winter and, with the coming of warm weather, tree surgery operations and a maintenance project for our faculty advisor. Our pulpwood sales are to begin shortly.

Our programs this year have been of high quality. The more recent ones have dealt with curriculum revision. Some of the meetings were with the faculty present and some without. These sessions have been constructive and no-holds-barred. This series is still in progress and we hope some meaningful changes will result from them.

The Club has 62 members this year who are active and help with Club functions. Through them we are trying to improve our Club and our School.

THE OKLAHOMA STATE UNIVERSITY FORESTRY CLUB

by Ron Barber

The Oklahoma State University Forestry Club was first established in 1947, and since then has grown to the present membership of almost one hundred. Our present department head is Dr. Edward E. Sturgeon, who is a native of Michigan. He is currently in his 3rd year as department head. The club advisors are Mr. Ted Silker, who hails from the state of Iowa, and Dr. Lamar Teate, a native of Georgia.

The Forestry Club of Oklahoma State University has been awarded the Agriculture Council Outstanding Club Award for the school years

1964-65 and 1966-67. After brief rest during the year 1967-68, we are looking forward to winning the Award for the school year 1968-69. As activities on campus and around Stillwater, the Club participated in the Homecoming festivities by entering a float in the parade. In the month of October we participated in our Annual "Log Jam" picnic, where all the guys got to personally meet and talk to all of the candidates for the Forestry Club Queen. After going through a series of preliminary activities, we elected Miss Marsha Jenkins as our Queen. A wise choice indeed.

The Club was involved in concession stand sales at football games, firewood cutting and Christmas tree sales during the first semester. The money derived from these sales was used to sponsor club activities. As a replay to last year, a small group of hardy forestry club members headed west out of Stillwater to help again a troop of Girl Scouts plant many, many trees. It was a cold day and everybody decided too many trees had been planted.

The second semester was devoted mainly to getting ready for this year's Conclave. We had five run-off days in Conclave events which led up to our final "22nd Annual Field Day" which was held on campus April 5. That night we had our Paul Bunyan Ball with a lot of good food, lots of awards, and a dance with a lot of pretty girls.

Intramural sports also took up a lot of time and energy for the Forestry Club. We participated in football, tennis, basketball, wrestling, volleyball, and softball.

THE V.P.I. FORESTRY CLUB

by David P. Meader

This has been a good year for the V.P.I. Forestry Club -- a year of innovation and change, a year of establishing precedents. With the growth of V.P.I. to full, *de facto*, university status and with the further increase in enrollment in the Department of Forestry and Wildlife, we have attempted to broaden our perspectives and make the club more cosmopolitan.

During spring quarter of the 1968-69 academic year the Forestry Club adopted a new constitution which, among other things, opened membership in the club to any student on campus. The new constitution also allows us to grant honorary membership for special services rendered to the club and for significant contributions to forestry at Virginia Tech, two men being so honored thus far.

At the traditional fall Field Day and Possum Hunt we initiated 35 new members, bringing our total enrollment to 140. Seven of our

number have become members of Xi Sigma Pi, the national forestry honor fraternity, and three have been made members of Alpha Zeta, the national agriculture honor frat, a very good reflection on both the department and the club.

Perhaps the highlight of our social year to date has been the Timber Beast Dance and Logger's Celebration, held for the first time at V.P.I. in February and open to all Techmen and their dates. Attire was strictly woodman's clothes, a double-bitted ax being awarded to the best dressed couple. In contrast music for the dance was by a modern soul group. The dance drew a good crowd and from the very favorable impression it created there are already plans to hold a bigger even better dance next year.

Other club programs and activities have varied this year from promotional movies on logging equipment, through seedling sales and plantings to guest speakers covering a range of topics. A large group of our members attended the Society of American Foresters symposium on undergraduate education, held in Roanoke, Va. In all, it has been a busy year for the Forestry Club, a good year, and one which has contributed much to our overall education at Virginia Polytechnic Institute.

THE SYLVANS CLUB

by Bill Sandeen

The Sylvans Club at Stephen F. Austin State College was organized for the purpose of furthering and promoting fellowship among forestry students and to increase their knowledge by having programs highlighting speakers in bi-weekly meetings.

The Sylvans Club sponsors many annual events such as a forestry field day, a homecoming parade float, Christmas dance, spring banquet, Sylvan's scholarship and several cookouts. The annual yearbook, "The Texas Tally", will soon roll from the presses.

This year the Club sponsored a Parent's Day in which all the parents of forestry majors were invited to experience a day in the life of a forestry major. It was a great success and over 120 persons attended.

The Club now publishes a bi-weekly newsletter, the "Knothole", as a service to all forestry majors to keep students informed of current happening in the School of Forestry.

THE UNIVERSITY OF TENNESSEE FORESTRY CLUB

by Charles W. Riddell, Jr.

The University of Tennessee Forestry Club has again experienced a school year filled with growth and achievement. Our club offers its members the opportunity for recreation, expression of constructive personal ideas, and fellowship with the objective of developing a well-round educational and socially active college experience.

Our growth can be attributed to the interest and leadership of each individual member. The enthusiastic support and unselfish assistance of our advisers Dr. H.A. Core and Dr. Mike Pelton, as well as, all of the faculty, have contributed substantially to this growth. Approximately 240 students were registered in Forestry during the winter quarter of the school year of which 80 students or one-third are active club members.

The UT Forestry Club actively sponsors and participates in the University intramural sports program which includes activities such as football, basketball, and softball. Our annual Fall Field Day is planned around preparations for the ASFC Conclave. We have competition in most all events, and this is in turn followed by a cookout. The club also sponsors an annual Spring Awards Banquet where individual achievements, scholastically and socially, are recognized.

Our club meeting on April 2, 1969 was indeed a special occasion. The meeting was highlighted with a visit by the Society of American Foresters Accreditation Committee. Dr. Henry M. Webster, Head of the Department of Forestry, Iowa State University, headed the committee which visited our department and campus April 2-4.

The committee was invited by Dr. Andrew Holt, UT President, to review our program in response to our application for accreditation. We are very optimistic of the results of this visit, and believe that the time, effort and planning under the leadership of our department head, Dr. J. W. Barrett, will go a long way in producing positive results.

MINUTES OF THE 12th ANNUAL CONCLAVE BUSINESS MEETING OF THE ASSOCIATION
OF SOUTHERN FORESTRY CLUBS

April 12, 1969

Auburn, Alabama

The Conclave business meeting was called to order at 10:25 P.M., Saturday, April 12, 1969, by ASFC President Tom Fell. All schools attending the Conclave were represented.

President Fell opened the floor for business and stated that the University of the South had officially withdrawn from the ASFC. He also encouraged better response from Association members to the host school concerning ASFC business correspondence.

Oklahoma moved that the first sentence in Section 5 of the Chain Throwing Rules be changed to read "The contestant must start with chain thrown and tied in hand at least 75 feet from the finishing stake." This motion was voted upon and passed.

Several representatives discussed possible changes that might be made in the protest committee. N.C. State moved to "add two (2) alternates to the protest committee so that judge of the event and advisor of said school shall not rule on the protest." After further discussion this motion was voted upon but failed to pass.

Oklahoma then moved that "The protest committee shall be composed of 3 staff members of schools within the Association. They shall be appointed by the host school and cannot serve as judge in any event." This motion carried and shall be written into Article VIII, Section K, of the ASFC Constitution.

Discussion followed on the scheduling of contest events. President Fell suggested that technical events might be held on Friday afternoon. N.C. State and Oklahoma proposed the possibility of "doubling up" on events. For example, chain throwing contestants might participate simultaneously rather than singly. V.P.I. stated that several new no-point contests in fields of interest related to forestry might be set up next year on a trial basis.

Stephen F. Austin moved to change Section 2 of the Compass and Pace Rules to read "The four (4) compass courses must be open traverses a total of 30-50 chains each, each with at least four (4) segments. Contestants will start at ten-minute intervals. Each contestant will run one of the four traverses." This motion was discussed, voted upon, and passed. President Fell suggested if this does not work in the future that eleven separate but comparable courses might be considered.

Florida moved for a vote of confidence in Auburn in appreciation for hosting the successful 1969 Conclave. The motion passed by a unanimous vote.

With business concluded, the meeting was adjourned at 11:15 P.M.

Gary L. Haas
Secretary, ASFC

CONSTITUTION OF THE ASSOCIATION OF
SOUTHERN FORESTRY CLUBS

As amended April 12, 1969 at the
Twelfth Annual Conclave

Article I. Name.

The name of the organization shall be the Association of Southern Forestry Clubs.

Article II. Objectives.

- A. To benefit the forestry clubs of the various southern schools by an interchange of ideas and stimulation of good fellowship among the club members.
- B. To establish and maintain:
 1. Unity of purpose and action within and among the southern forestry clubs.
 2. A high standard of professional ethics.
 3. Closer cooperation and relationship between students and professional foresters.
- C. To hold an annual conclave.

Article III. Membership.

A. Qualifications.

1. Any forestry club of a university or college of Alabama, Arkansas, Florida, Georgia, Kentucky, Louisiana, Mississippi, North Carolina, Oklahoma, South Carolina, Tennessee, Texas, Virginia, or West Virginia granting a baccalaureate degree in forestry, or equivalent, with a major of forestry, or a higher degree in forestry, shall be eligible for voting membership in this association upon a majority approval of a petition submitted to the voting member clubs; or by application by representation at the Annual Conclave.
2. Charter Members: Louisiana State University, University of Florida, Stephen F. Austin State College, Mississippi State University, Oklahoma State University, University of the South, Arkansas A & M College, Auburn University, University of Georgia, North Carolina State College, and Clemson Agriculture College.
3. Any Forestry Club of a senior university or college within the state listed in Part 1 of this section not granting a baccalaureate degree in forestry, shall be eligible for associate membership upon a majority approval of a petition submitted to the voting member clubs.

B. Privileges.

Members (each club) are entitled to one vote and full participation in all conclave activities.

C. Dues.

1. The Annual dues shall be one hundred (\$100) dollars for each member club. Entering clubs shall pay a reduced rate to be set by the Association.
2. The dues shall be used to pay for correspondence, publications, and other association expenses of the host club and any excess funds may be the host club's.
3. The dues for the year will be paid to the host school by January 1, preceding the Conclave.

Article IV. Officers.

A. The officers of the association shall be:

1. President - elected from and by the host club.
2. Vice-President - one elected from any by each member club.
3. Secretary - elected from and by the host club.
4. Treasurer - elected from and by the host club.
5. Editor - elected from and by the host club.

B. The Duties of the Officers.

1. The duties of the President shall be:
 - a. To preside at all meetings of the association.
 - b. To appoint committees.
 - c. To be responsible for submitting an officers report to the accumulative files upon the completion of ASFC Conclave.
 - d. To be responsible for obtaining reports from each of his committees and officer heads of the host club.
 - e. To perform all other duties necessary.
2. The duties of the Vice-President shall be:
 - a. To act as a representative of his club.
 - b. To notify the president of his election.
 - c. To complete a report of the activities of the association, and be responsible for submitting materials to the host club for annual publication.
 - d. To be responsible for submitting to member clubs publications within his club and maintaining an accumulative file of ASFC correspondence.
3. The duties of the Secretary shall be:
 - a. To keep the minutes of all meetings of the association and to conduct all correspondence relative to the business of the association.
 - b. To submit an officer's report for the accumulative files, completion of the ASFC Conclave.
4. The duties of the Treasurer shall be:
 - a. To receive and have custody of all money paid to the association.
 - b. To keep a careful record of all receipts and expenditures.
 - c. To prepare a financial report for publication in the annual issue of "THE SOUTHERN FORESTER."
 - d. To be responsible for the collection of dues.
5. The duties of the Editor shall be:
 - a. To gather and edit all material for the annual publication, "THE SOUTHERN FORESTER."

- b. To see that the provisions of Article VII are carried out.
- C. Tenure of Office.
Officers are to hold office until the next Annual Conclave with the exception of the editor, who will serve until the publication is distributed.
- D. Election of Officers.
 - 1. The President, Secretary, Treasurer, and Editor of the Association shall be elected by the host club at their first club meeting following the Conclave.
 - 2. Vice-Presidents of the Association shall be elected by their respective clubs at their first meeting following the Conclave.

Article V. Meetings.

- A. Time of meetings.
 - 1. Meetings shall be during the annual spring Conclave on the last night of the Conclave.
 - 2. The exact time of the meetings is to the discretion of the host club.
- B. Election of Host Club.
 - 1. The host club shall be selected from bids submitted by member clubs at each annual meeting by a roll call majority vote two years in advance.
 - 2. In case of tie, the president shall cast the deciding vote.
 - 3. No club shall be host more than once in three years.
 - 4. If a previously elected host notifies the members of the ASFC, by October 1 of the year before it is to hold the conclave, that it cannot hold the conclave, the president shall solicit bids from the members and then send a ballot to each member club to be voted on in writing.
 - 5. The host club shall be alternated from east to west whenever possible.
- C. Files.
 - 1. Accumulative files shall be maintained by the host club and shall include all member reports and correspondence.
 - 2. Each file shall contain a copy of the ASFC Constitution.

Article VI. Amendments.

The constitution may be amended or revised by a two-thirds vote of the voting member clubs.

Article VII. Publications.

- A. Title. The title of the publication shall be "THE SOUTHERN FORESTER."
- B. The constitution shall be published annually in the publication of "THE SOUTHERN FORESTER."
- C. The past host club shall publish the ASFC periodical within one month after the Annual Conclave.
- D. Securing items for publications.
 - 1. The articles shall be edited by the member club and submitted to the host club.

2. Article to be printed in the current issue must be in the hands of the publishing editor not later than the time of the Annual Conclave.

E. Distribution.

Each conclave contestant will receive one (1) copy of "THE SOUTHERN FORESTER." A minimum of twenty (20) will be sent to participating member clubs.

F. Proceedings of the Conclave.

Proceedings of each Annual Conclave, including minutes of the business meetings, will be published by the past host club in the annual publication.

Article VIII. Contests.

A. Competitive events will be held at each Annual Conclave.

B. There will be 15 standard competitive contests at each Annual Conclave.

1. Standard events:

- | | |
|------------------------|---------------------|
| a. Dendrology | i. Knife throwing |
| b. Compass and pacing | j. Pole climbing |
| c. Timber estimation | k. Bow sawing |
| d. D.B.H. estimation | l. Log rolling |
| e. Pole classification | m. Cross-cut sawing |
| f. Wood technology | n. Log chopping |
| g. Chain throwing | o. Bait casting |
| h. Axe throwing | |

2. Scoring will be based on the number of schools participating in the Conclave. First place winners in field events will be awarded a number of points equal to the total number of schools participating. Second place winners receive 1 less point than the total number of participating schools, third place winners will receive 2 less points than the total number of participating schools, and so on with each succeeding participant who satisfactorily completes the event receiving one or more points. First place winners in technical events will be awarded a number of points equal to the number of participating schools multiplied by 1.5. Second place winners will receive 1.5 points less than the total number of points awarded first place winners, third place winners will receive 3 points less than the total number of points awarded first place winners, and so on with each succeeding participant who satisfactorily completes the event receiving 1.5 or more points.

C. In addition to the 15 standard events established in Section B, there may be a maximum of five (5) contests at the discretion of the host club, provided that these contests be specified with rules and explanations at the preceding Annual Conclave. Requests for omission of any standard contests will be made at the preceding Annual Conclave with a two-thirds (2/3) majority vote necessary for approval.

D. The standard set of rules will be made and approved by the voting members of the ASFC.

E. Selection of judges of all contests will be left to the discretion of the host club except in the event the host club participates; then judging will not be done by members of the host club.

F. Only students presently enrolled in a school or department of forestry will be eligible to enter ASFC events. In the case

the University of Florida and the University of the South freshmen and sophomore students presently enrolled and who declared an intention of enrolling in the forestry department or school at the beginning of their junior year will also be eligible for participation.

- C. The contestant must meet the same requirements as are specified for individual participation in school athletics. The contestant must be an undergraduate student and he must meet his own school's requirements both scholastically and in credit for athletic participation.
- H. In the event that the Conclave delegation or spectators of any member school intentionally or otherwise interfere with the progress of any event in the Conclave, that delegation shall forfeit its rights to score any points in that event.
- I. VPI is hereby considered a member of the ASFC by vote taken on May 4, 1963.
- J. A table of random numbers will be used to choose order of team's participation in each event. This order will be sent to each participating school before the Conclave.
- K. Contest protests must be filed with a committee of staff members within fifteen (15) minutes of the individual infraction. The protest committee shall be composed of three (3) staff members of schools within the Association. They shall be appointed by the host school and cannot serve as judge in any event.
- L. Contestants in the log chopping event must wear hard-toe footwear; the use of shin guards is left to the individual's discretion.
- M. Tennessee is hereby considered a member of the ASFC by unanimous vote taken on April 8, 1967.
- N. The University of the South is hereby no longer considered a member of the ASFC after the submission of a letter of resignation on April 12, 1969.

COMPLIMENTS OF

Union Camp

WALKER-WILLIAMS LUMBER COMPANY

Specializing in Pressure Treated Forest Products

WOLMAN SALTS - PENTA.



MANUFACTURERS OF PINE AND HARDWOOD

HATCHECHUBBEE, ALABAMA

TELEPHONE
HURTSBORO, ALABAMA
667-2611

THE
**BEN
MEADOWS
COMPANY**
353 AMSTERDAM AVE., N.E.
ATLANTA, GEORGIA 30306



**TEXTILE HARDWOOD
MANUFACTURING CO., INC.**

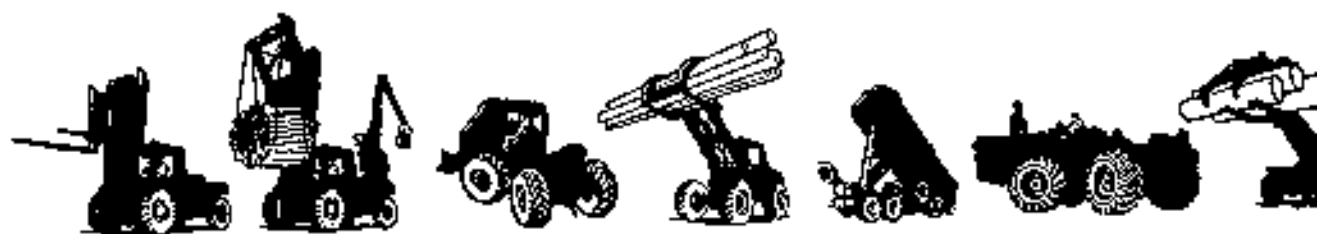
P. O. BOX 4307

HUNTSVILLE, ALABAMA 35802

 **SCOTCH**
LUMBER COMPANY
FULTON, ALA. TEL. (205) 636-4451



You may never need our "Sudden Service", but when you do, it's there in a hurry. Taylor maintains service facilities throughout the South and across the country through Sudden Service dealers, linked together by an instant communications network. Taylor non-captive parts can be obtained from the manufacturers' outlets, if this is more convenient. A fleet of service trucks, actually parts warehouses on wheels, is ready to be at your side right in the field. You can always count on Big Red!



THE BIG RED LINE • TAYLOR MACHINE WORKS • LOUISVILLE, MISSISSIPPI 39339 • PHONE (601) 773-3



GREAT NORTHERN PAPER COMPANY



TREES GROW JOBS

WOODLANDS DEPARTMENT

Cedar Springs Georgia 31732

GEORGIA KRAFT COMPANY

WOOD AND WOODLANDS DIVISION

ROME, GEORGIA

ALABAMA KRAFT COMPANY

Mohr, Alabama

a division of

GEORGIA KRAFT COMPANY

TIMBER IS A CROP - PREVENT FOREST FIRES - GROW MORE TREES - THEN HARVEST THEM WISELY

COMPLIMENTS

OF

Kimberly · Clark  Corporation

COOSA RIVER NEWSPRINT DIVISION COOSA PINES, ALABAMA 35044
TELEPHONE AREA CODE 205 378-2711



Paul Otterbach, Forest Engineer at International Paper

Some foresters

just don't look like they used to!

But they aren't what they used to be either!

Today, he is moving on to greater responsibilities and more demanding jobs. The key has been education.

I-P's modern foresters are involved in the purchase and sale of land and timber, wood procurement, labor relations, wildlife management, public relations, recreational development, conservation, administration, research, and the use of computers.

No, the modern forester doesn't look like he used to. But, as we said, he isn't what most people think he is either!



INTERNATIONAL PAPER COMPANY

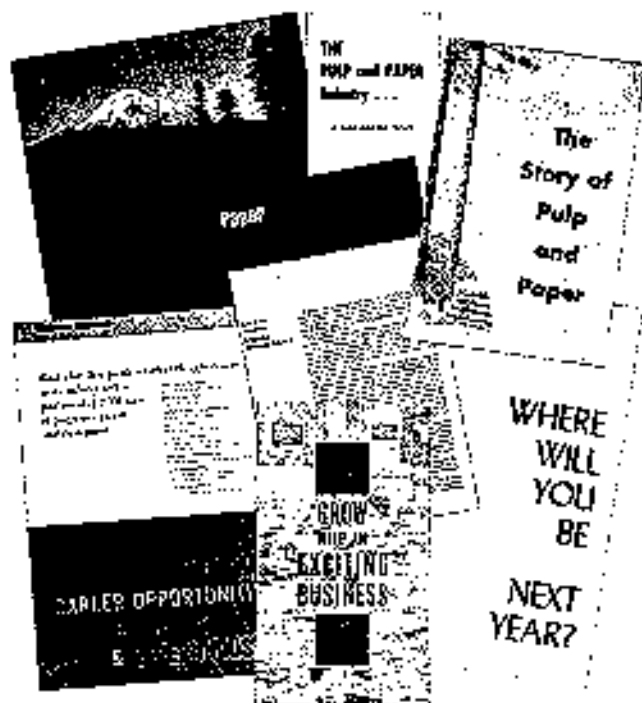
McSHAN LUMBER COMPANY, Inc.

Pine and Hardwood Lumber

**TELEPHONE 375-2297
Area Code 205**

McSHAN, ALABAMA 35471

MEMBER: SOUTHERN PINE ASSOCIATION



LOOKING FOR A CAREER?

Check the pulp and paper industry.



BOWATER SOUTHERN PAPER CORPORATION

COMPLIMENTS

OF

Kimberly·Clark  Corporation

COOSA RIVER NEWSPRINT DIVISION COOSA PINES, ALABAMA 35044
TELEPHONE AREA CODE 205 376-2711



Paul Otterbach, Forest Engineer at International Paper

Some foresters just don't look like they used to!

But they aren't what they used to be either!

Today, he is moving on to greater responsibilities and more demanding jobs. The key has been education.

I-P's modern foresters are involved in the purchase and sale of land and timber, wood procurement, labor relations, wildlife management, public relations, recreational development, conservation, administration, research, and the use of computers.

No, the modern forester doesn't look like he used to. But, as we said, he isn't what most people think he is either!



INTERNATIONAL PAPER COMPANY

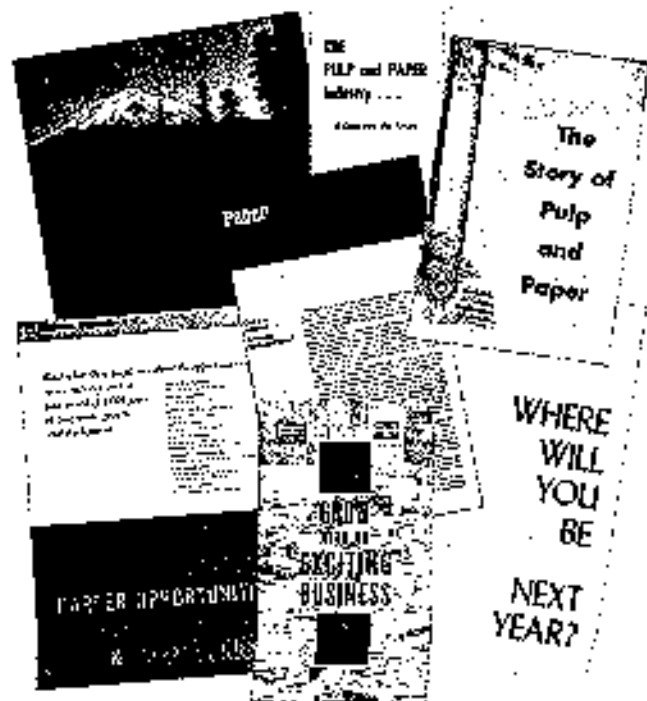
McSHAN LUMBER COMPANY, Inc.

Pine and Hardwood Lumber

TELEPHONE 375-2297
Area Code 205

McSHAN, ALABAMA 35471

MEMBER: SOUTHERN PINE ASSOCIATION



LOOKING FOR A CAREER?

Check the pulp and paper industry.



BOWYER SOUTHERN PAPER CORPORATION
Cotton, Tissue

COWIKEE LUMBER COMPANY

Eufaula, Alabama 36027

Forestry Suppliers, Inc.



P. O. BOX 8397 205 W. RANKIN STREET

JACKSON, MISSISSIPPI 39202

**E. L. SPENCER
LUMBER CO.**

Phone 867-7071
Auburn, Alabama

Stallworth Pine Products Co


Processors - Dealers - Exporters
All Grades of Rosin — Turpentine
Postoffice Box 1114 Mobile, Ala

GUM TURPENTINE
GUM ROSIN

LONGWOODS "SPICO"
BENTLEYS-ABC'S

TELEPHONE
452-2222
AREA CODE 904

PROCESSING PLANT
WHISTLER, ALA.

GULF STATES  PAPER

THE SILENT REVOLUTION

• **GROWING TREES** don't make much noise. But Alabama's fast-growing woodlands are making possible a major industrial revolution in this state. Alabama is right at the top as a pulpwood producer and soon will capture the number one spot in the manufacture of

In the twenty-one million acres of land that make this revolution possible, only the chain saw's chatter reminds you that these quiet forests are at work. Each day the forests grow more productive. Each year more wood is grown on the same amount of land.

There's still much to be done: millions of acres of land are only partly productive. And there is no more land available to Alabamians. Tomorrow's timber needs must come by better use of what we have. More jobs and more people; a growing market faces her timber growers. Alabama's woodlands must work harder to carry out this silent revolution.

AND ITS WOODLANDS DIVISION: WARRIOR LAND & TIMBER CO.
HOME OFFICES: P. O. Box 3199, TUSCALOOSA, ALABAMA 35401



The Managed Forest

From mechanized harvesting to an improved method of site preparation—you'll find our woodlands group using a variety of new techniques to manage the forests. It's all part of O-I's continuing program to employ the latest technological advances in growing and harvesting successive crops of timber.

"Multiple use" is also a vital part of our overall land management philosophy. O-I woodlands serve

as valuable watersheds and help to meet the growing need for public recreational areas.

Industrial woodlands management is an exciting, rewarding business. We look forward to a future of continued progress and technological development.

OWENS-ILLINOIS
FOREST PRODUCTS DIVISION | 
TOLEDO, OHIO