



## E R R A T A

Due to a publisher's error, the heading over the first three place teams were changed. We offer our humble apologies to North Carolina State University (First Place), Arkansas A and M University (Second Place), and Oklahoma State University (Third Place). We deeply regret this error.

There is also a mistake in the A.S.F.C. minutes. In Bow Sawing the word, "can't" should read "CANT".

If there are any other errors, we hope you will accept our apologies.

Sincerely,

Virginia Tech Forestry Club

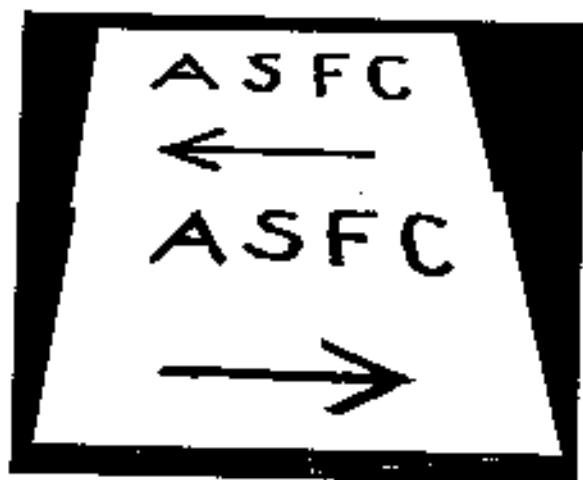


THE VIRGINIA TECH  
**FORESTRY CLUB**

P  
R  
E  
S  
E  
N  
T  
S

THE  
SOUTHERN  
FORESTER

FOR  
1970



EDITOR ..... Gary W. Woodyard  
PHOTOGRAPHERS ..... Tom Reay  
Terry Loyer  
COVER ..... James Kennedy

# CONTENTS

The A. S. F. C. Crew for 1969-70 .....	4
Field Events .....	5-8
Technical Events .....	9-10
Final Score .....	11-12
First Place .....	13
Second Place .....	14
Third Place .....	15
Other Clubs .....	16-23
Regular Business Meeting .....	24
Constitution .....	25-28
Advertisements	
Westvaco .....	29
F & F Equipment Company .....	30
Forestry Suppliers, Inc. ....	31
Kenworth .....	32
Forest View Evergreen Nursery .....	33
Homelite .....	33
Cranco Company .....	33
Southern Printing Company .....	33

# THE PRESIDENT SPEAKS

Four years ago, as a Freshman in 1968, I was my good fortune to attend, along with the V. P. I. Forestry Club, the eighth annual ASFC conclave at Stephen F. Austin. It was at that time that we realized that in 1970 V. P. I. would host the 13th annual conclave. I did not know, at that time, of the departmental changes which would occur and make it possible to be present for Tech's production and never dreamed it would be my pleasure to be your president of the ASFC.

And that is what it has been, a pleasure. It would never have been so without the wonderful help of Dr. Robert Martin, our faculty advisor, and all of the officers, committee chairman, secretaries, technicians, and club members who worked so hard. Through our collective efforts we hope that ours was a successful and enjoyable conclave.

This year we tried several new innovations which we hoped aided in the efficiency and enjoyment of our conclave. I hope that the liars convention will become a traditional part of the Friday night festivities and that it will be possible to continue doubling up on time consuming events. Although it is not possible on all of our member campuses, I hope that, whenever possible, the host club tries to provide centralized refreshments. This system prevents the need of guests leaving camp for various reasons, possibly to have an encounter with the police.

This year, for the first time, two wildlife technical events were included in the conclave activities as an addition to the wildlife skill event, bait casting. I feel that foresters can no longer regard themselves as strictly "timber beasts" but more so as total resource managers. And the wildlife of our forests is certainly one of our prized resources. I feel that as foresters, we should be aware of the effects of various silvicultural practices upon the wildlife, and this necessitates knowing and considering their habits.

This year the business meeting failed to adopt the two trail events as regular point events to be used in following conclaves. I would urge each of you to consider carefully and objectively the pros and cons of wildlife events, and I hope that next year they will be voted into full acceptance.

I am sure that all of you realize that this conclave could not have been the success that it was without the support and cooperation of each club and its members, so each of you had a part in our success. Thanks.

And finally, the V. P. I. Forestry Club would like to wish Arkansas A & M the best of luck for a successful and rewarding 14th Annual Conclave.

*Kenneth B. Hodge, President*

# THE A.S.F.C. CREW

## For 1969-70



KENNETH B. HODGE  
President



JOHN E. GREEN, Jr.  
Vice President from VPI



STEPHEN J. DAGWELL  
Treasurer



MICHAEL L. THOMPSON  
Secretary



GARY W. WOODYARD  
EDITOR



JOHN M. DOUGHTY  
Insurance Committee Chairman



DAVID M. HARDY  
Facilities Committee  
Chairman



TERENCE K. SMITH  
Awards Committee  
Chairman



JOSEPH G. WALLMEYER  
Publicity Committee  
Chairman

SANS PHOTO: FACULTY ADVISORS: Dr. Robert E. Martin  
Mr. Robert C. Parker

STAFF ASSISTANCE: Mrs. Jean Pardue  
Mr. John Crawford

# FIELD EVENTS

## AXE THROWING

SCHOOL	CONTESTANT	PLACE
Arkansas A&M	Burford	1
Tennessee	Wells	2
Oklahoma State	Swords	3
Clemson	Bullock	4
Georgia	Jones	5
N.C. State	Folk	5
Mississippi State	McCallum	5
S.F. Austin	Bradiff	6
Florida	Lecheroq	9
Auburn	Welker	10
V.P.I.	Arvin	11



## BAIT CASTING

SCHOOL	CONTESTANT	PLACE
Arkansas A&M	Langford	1
V. P. I.	Greenaway	2
N. C. State	Naylor	3
Tennessee	Wilson	4
Oklahoma State	London	5
Mississippi State	Welborn	6
Florida	Underwood	7
Georgia	Huf	8
S. F. Austin	Thorp	9
Clemson	Birch	10
Auburn	Morrow	11

## BOW SAWING

SCHOOL	CONTESTANT	PLACE
N. C. State	Botkins	1
Oklahoma State	Baker	2
Arkansas A&M	Mason	3
V. P. I.	Reay	4
Georgia	Perdue	5
S. F. Austin	Townley	6
Auburn	Sentell	7
Mississippi State	Fry	8
Florida	Davis	9
Clemson	O'Brien	10
Tennessee	Milazzo	11



## FIELD EVENTS



### CHAIN THROWING

SCHOOL	CONTESTANT	PLACE
S. F. Austin	Farmer	1
N. C. State	Slits	2
Arkansas A&M	Green	3
Georgia	Dulinawka	4
Oklahoma State	Cheek	6
Auburn	Jaggars	6
Clemson	Stewart	7
Tennessee	Tobler	8
Florida	Buist	9
V. P. I.	Williamson	10
Mississippi State	Derrington	11

### CROSS CUT SAWING

SCHOOL	CONTESTANT	PLACE
M. C. State	Coggins-Folk	1
Oklahoma State	Franklin-Kitch	2
Clemson	Belkas-Moore	3
Arkansas A&M	Burford-Humphries	4
S. F. Austin	Böhrens-Lauid	5
Florida	Buist-Kean	6
V. P. I.	Hodge-Wallmeyer	7
Georgia	Cook-Shaw	8
Auburn	Wise-Haines	9
Mississippi State	West-Sellers	10
Tennessee	Tutt-Bishop	11



### KNIFE THROWING

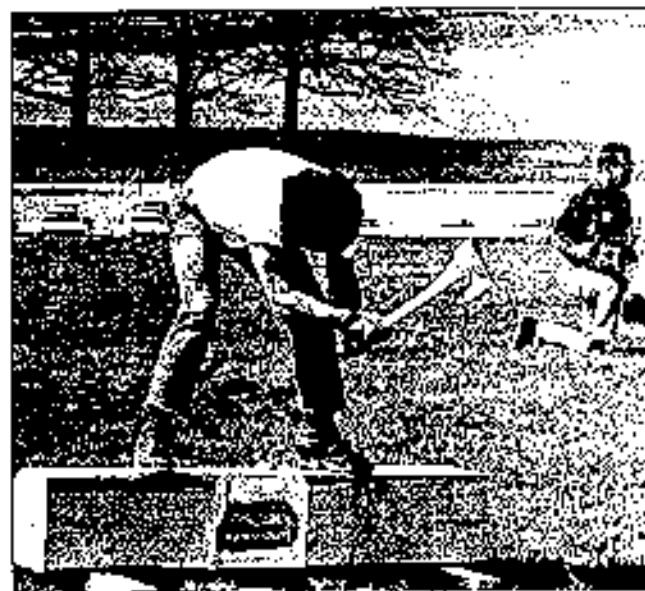
SCHOOL	CONTESTANT	PLACE
Oklahoma State	London	1
N. C. State	Stephens	2
Mississippi State	Hagen	3
Arkansas A&M	Eagle	4
Georgia	Tennaer	5
S. F. Austin	Farmer	5
Auburn	Bryant	5
V. P. I.	Smith	8
Florida	Dana	8
Tennessee	Hitchcock	10
Clemson	Page	10



## FIELD EVENTS

### LOG BURLING

SCHOOL	CONTESTANT	PLACE
Arkansas A&M	Hawkins	1
V. P. I.	Tisdale	2
Oklahoma State	Swords	3
Georgia	Arndt	4
N. C. State	Butkins	5
S. F. Austin	Cunningham	6
Tennessee	Hawkins	6
Clemson	Bullock	6
Florida	Phillips	9
Auburn	Steeley	9
Mississippi State	Smith	9

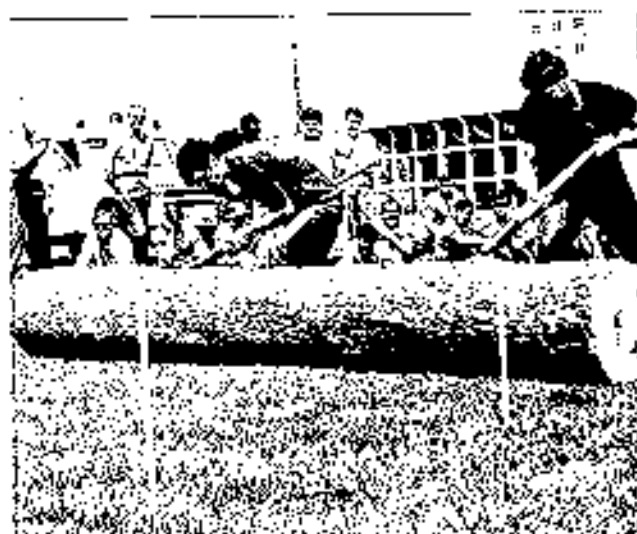


### LOG CHOPPING

SCHOOL	CONTESTANT	PLACE
N. C. State	Coggins	1
Arkansas A&M	Hawkins	2
Clemson	Hubbard	3
Oklahoma State	Moore	4
V. P. I.	Nemora	5
S. F. Austin	Murphy	6
Auburn	Jagers	7
Georgia	Snipes	8
Florida	Gillmore	9
Tennessee	Cross	10
Mississippi State	Richerson	11

### LOG ROLLING

SCHOOL	CONTESTANT	PLACE
Arkansas A&M	Owen-Hartcastle	1
N. C. State	Botkins-Roberson	2
Oklahoma State	Moore-Franklin	3
Tennessee	Nanney-Savery	4
V. P. I.	Hodge-Wallmeyer	6
Auburn	True-Holiday	6
Florida	Gilmore-Holyfield	7
Clemson	Moore-Belken	8
Mississippi State	Cornish-Derrington	9
S. F. Austin	Jackson-McAdams	10
Georgia	Jones-Reed	11



## FIELD EVENTS

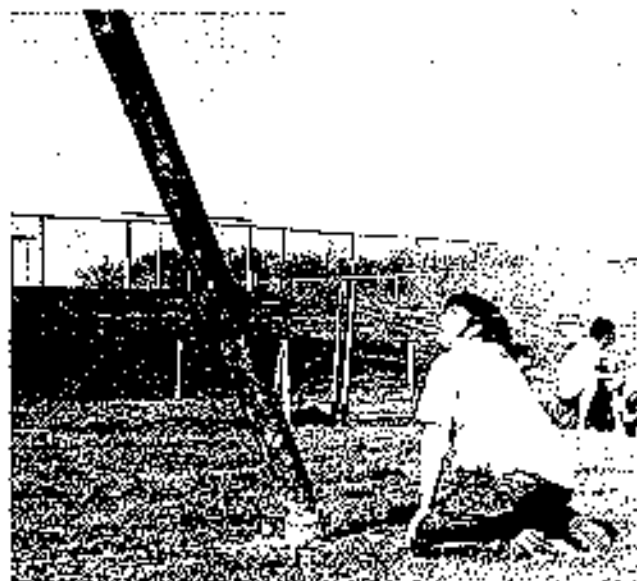


### POLE CLIMBING

SCHOOL	CONTESTANT	PLACE
Arkansas A&M	Lovett	1
Tennessee	Savery	2
N. C. State	Lee	3
S. F. Austin	Scholtz	4
Oklahoma State	Schrick	5
Georgia	Fenn	6
Clemson	Birch	7
Auburn	Stealey	8
V. P. I.	Simpkins	9
Mississippi State	Inmon	10
Florida	Brooke	11

### POLE FELLING

SCHOOL	CONTESTANT	PLACE
Clemson	Henriksen	1
Oklahoma State	Baker	2
Georgia	Dulinawka	3
Arkansas A&M	Burford	4
Florida	Matthews	5
V. P. I.	Rosy	6
N. C. State	Coggins	7
Mississippi State	Smith	8
Tennessee	Bardner	9
Auburn	Clark	10
S. F. Austin	Murphy	11



### FIRE FIGHTING

#### S. F. AUSTIN

Larry Behrens

# TECHNICAL EVENTS

## COMPASS AND PACING

SCHOOL	CONTESTANT	PLACE
Florida	Patterson	1
V. P. I.	Smith	2
Clemson	Douglass	3
Mississippi State	Knight	4
Oklahoma State	Wells	5
S. F. Austin	Fansler	6
N. C. State	Shirley	7
Tennessee	Milazzo	8
Georgia	Gresham	9
Auburn	Clark	10
Arkansas A&M	Rhodes	11

## DENDROLOGY

SCHOOL	CONTESTANT	PLACE
N. C. State	Brewer	1
Auburn	Welker	2
Tennessee	Nantney	3
S. F. Austin	Farmer	4
Mississippi State	Shelton	5
Arkansas A&M	Kelley	6
Clemson	Dockl	7
V. P. I.	Neblett	8
Georgia	Iglan	9
Florida	Ash	10
Oklahoma State	Baker	11

## DBH ESTIMATION

SCHOOL	CONTESTANT	PLACE
N. C. State	Richards	1
Georgia	Doodlittie	2
Arkansas A&M	Crowson	3
Florida	York	4
Clemson	Selken	5
S. F. Austin	Skuba	6
Oklahoma State	Baker	7
Auburn	Conway	8
V. P. I.	Dagwell	9
Mississippi State	Warren	10
Tennessee	Herbaugh	11

## POLE CLASSIFICATION

SCHOOL	CONTESTANT	PLACE
Arkansas A&M	Green	1
Oklahoma State	McKinley	2
Georgia	Southard	3
N. C. State	Wilson	4
V. P. I.	Green	5
Clemson	Stewart	6
Auburn	Beasley	7
Tennessee	Burnette	8
S. F. Austin	Sandeen	9
Mississippi State	Porter	10
Florida	Hryshkanych	11

# TECHNICAL EVENTS

## TIMBER ESTIMATION

SCHOOL	CONTESTANT	PLACE	SCHOOL	CONTESTANT	PLACE
Mississippi State	Inman	1	N. C. State	Smith	7
S. F. Austin	Thompson	2	V. P. I.	Doughty	8
Arkansas A&M	Burford	3	Clemson	Patterson	9
Auburn	Conway	4	Oklahoma State	Smith	10
Florida	York	5	Tennessee	Cox	11
Georgia	Koulinos	6			



## WOOD TECHNOLOGY

SCHOOL	CONTESTANT	PLACE
S. F. Austin	Moody	1
N. C. State	Huff	2
Auburn	Crow	3
Arkansas A&M	Meyer	4
Clemson	Bullock	4
V. P. I.	Williamson	6
Georgia	Tylar	7
Tennessee	Hudlow	7
Mississippi State	Kloter	9
Oklahoma State	Davis	10
Florida	Hryshkanych	11

## WILDLIFE EVENTS

### MAMMAL IDENTIFICATION

SCHOOL	CONTESTANT	PLACE
V. P. I.	Clifford	1
S. F. Austin	Moody	2
Arkansas A&M	Crowson	3
Georgia	Tanner	4
Mississippi State	Welborn	4
N. C. State	Ourganus	5



### BIRD IDENTIFICATION

SCHOOL	CONTESTANT	PLACE
V. P. I.	Rizzo	1
S. F. Austin	Townley	2
Arkansas A&M	Eagle	3
Georgia	Eaves	4
Mississippi State	Looney	5

# THE FINAL SCORE!

Team	Points	1st	2nd	3rd	4th	5th	6th	7th	8th	9th	10th	11th	12th	13th	14th	15th	16th	17th	18th	19th	20th	21st	22nd	23rd	24th	25th	26th	27th	28th	29th	30th	31st	32nd	33rd	34th	35th	36th	37th	38th	39th	40th	41st	42nd	43rd	44th	45th	46th	47th	48th	49th	50th
Arkansas A.M.	10	11	12	13	14	15	16	17	18	19	20	21	22	23	24	25	26	27	28	29	30	31	32	33	34	35	36	37	38	39	40	41	42	43	44	45	46	47	48	49	50	51	52	53	54	55	56	57	58	59	60
Auburn	11	12	13	14	15	16	17	18	19	20	21	22	23	24	25	26	27	28	29	30	31	32	33	34	35	36	37	38	39	40	41	42	43	44	45	46	47	48	49	50	51	52	53	54	55	56	57	58	59	60	
Clemson	12	13	14	15	16	17	18	19	20	21	22	23	24	25	26	27	28	29	30	31	32	33	34	35	36	37	38	39	40	41	42	43	44	45	46	47	48	49	50	51	52	53	54	55	56	57	58	59	60		
Florida	13	14	15	16	17	18	19	20	21	22	23	24	25	26	27	28	29	30	31	32	33	34	35	36	37	38	39	40	41	42	43	44	45	46	47	48	49	50	51	52	53	54	55	56	57	58	59	60			
Georgia	14	15	16	17	18	19	20	21	22	23	24	25	26	27	28	29	30	31	32	33	34	35	36	37	38	39	40	41	42	43	44	45	46	47	48	49	50	51	52	53	54	55	56	57	58	59	60				
Miss. St.	15	16	17	18	19	20	21	22	23	24	25	26	27	28	29	30	31	32	33	34	35	36	37	38	39	40	41	42	43	44	45	46	47	48	49	50	51	52	53	54	55	56	57	58	59	60					
NC State	16	17	18	19	20	21	22	23	24	25	26	27	28	29	30	31	32	33	34	35	36	37	38	39	40	41	42	43	44	45	46	47	48	49	50	51	52	53	54	55	56	57	58	59	60						
Okla. St.	17	18	19	20	21	22	23	24	25	26	27	28	29	30	31	32	33	34	35	36	37	38	39	40	41	42	43	44	45	46	47	48	49	50	51	52	53	54	55	56	57	58	59	60							
S.F.A.	18	19	20	21	22	23	24	25	26	27	28	29	30	31	32	33	34	35	36	37	38	39	40	41	42	43	44	45	46	47	48	49	50	51	52	53	54	55	56	57	58	59	60								
Tennessee	19	20	21	22	23	24	25	26	27	28	29	30	31	32	33	34	35	36	37	38	39	40	41	42	43	44	45	46	47	48	49	50	51	52	53	54	55	56	57	58	59	60									
V.A. Tech	20	21	22	23	24	25	26	27	28	29	30	31	32	33	34	35	36	37	38	39	40	41	42	43	44	45	46	47	48	49	50	51	52	53	54	55	56	57	58	59	60										





Firefighting is tomorrow!



Drumstick?!



Home Sweet Home



Snake bite medics



"Did you see the size of that guy?!"



"Come on, say something. It don't bite."



A Good Time For All

# FIRST PLACE



## THE 1968 ARKANSAS A & M FORESTRY CLUB

BY RUDY THORNTON

1968 has been a most productive and rewarding year for our organization. As a club we sponsored the first Southeast Arkansas Equipment Show held on October 14th and 15th. Companies representing all facets of the timber harvesting process were allowed to operate under actual woods conditions. In this manner, the several hundred persons who attended were able to better evaluate the performance of the equipment. The proceeds received from the various exhibiting fees and the harvested timber will be used to help finance the 1971 A.S.F.C. Conclave to be held in Arkansas.

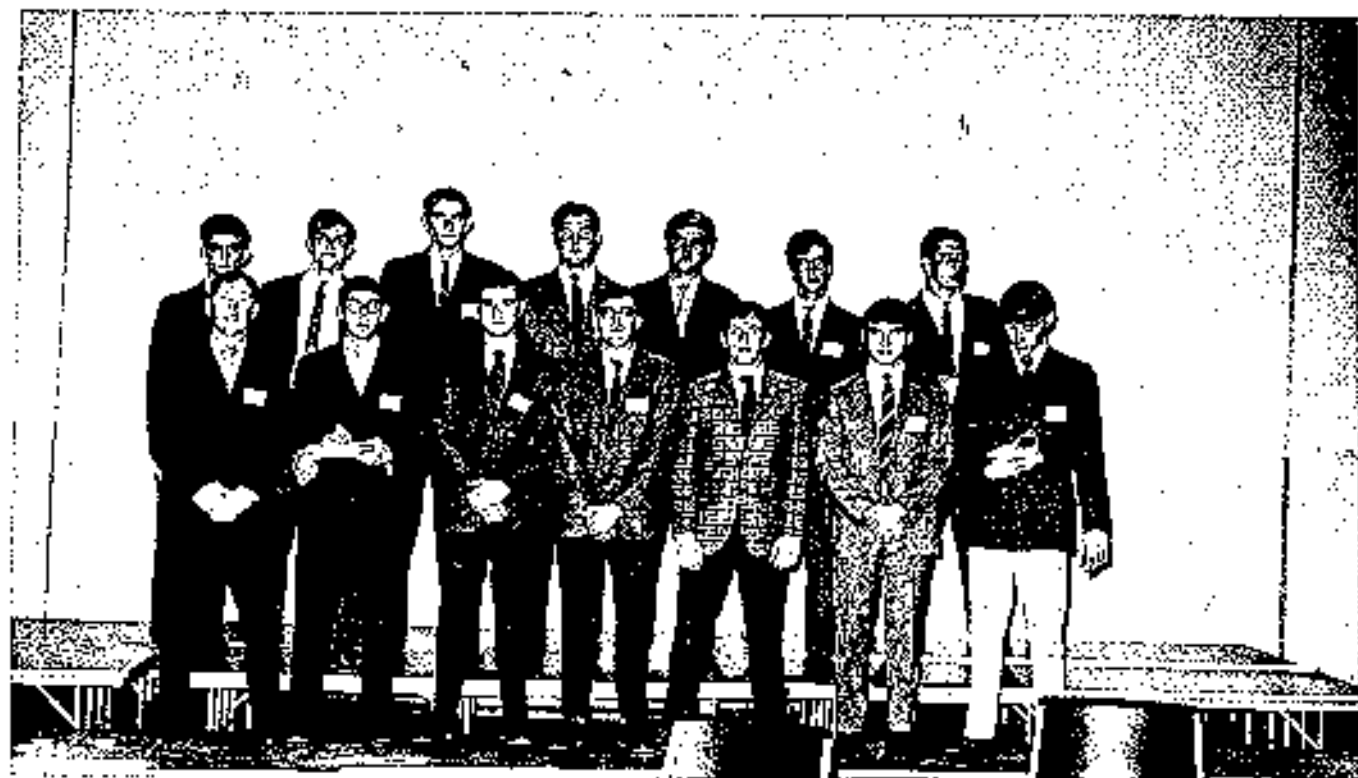
In addition to sponsoring and coordinating the Southeast Arkansas Equipment Show, our club participated in Homecoming activities, Alumni Day, and Intramural sports. We sold programs at all home football games and were responsible for concessions at nearly all Student Senate sponsored dances. Our club received campus-wide recognition for its Christmas project — two illuminated trees near the Forestry Building.

Several members of the club have been working in conjunction with the A & M Public Relations Department and Forestry faculty in recruiting high school students in the hope of increasing enrollment of students studying forestry at Arkansas A & M College.

The annual "Spring Banquet" is to be held this May in order to review the year's activities, present scholastic and leadership awards, and honor the graduating seniors. This final event of the school year is one of mixed emotions: joy in recalling the many activities and sadness in realizing the school year has come to a close. We consider this banquet as a very fine manner in which to bring to an end to another year of Arkansas A & M Forestry Club history.

We are justifiably proud of the very fine fellowship enjoyed by Forestry students at Arkansas A & M College. Our club is recognized as one of the best organized and most active organizations on the A & M campus. Hosting the 1971 A.S.F.C. Conclave will be a difficult and trying task, but we are determined to extend our best efforts for its success.

# SECOND PLACE



## THE AUBURN FORESTRY CLUB

BY HERMAN JAGGERS

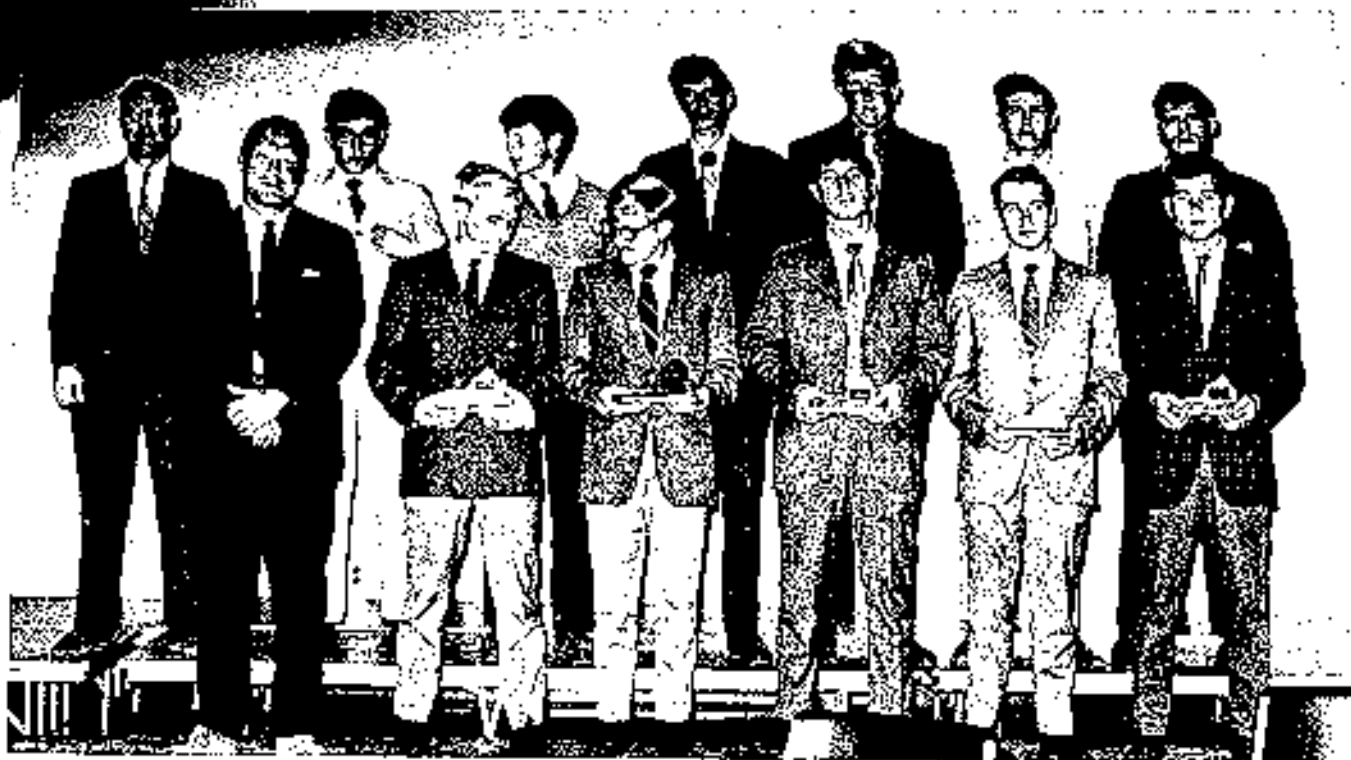
The past year has been rewarding in both experience and enjoyment for the Auburn Forestry Club. The fall quarter was started off with the orientation of new students in order to acquaint them with the Forestry Club and encourage their participation. The Club also participates in bi-quarterly Forestry Convocations and aids in the publication of the annual Forestry Newsletter which informs alumni and students of the department and club activities.

Fall quarter also marks the beginning of the club fund raising projects. This begins with the sale of football programs at home games and continues through the winter months with the sale of firewood. This year the club was able to purchase a new chainsaw which will greatly increase our money-making potential.

The Forestry Club sponsors, in the fall and spring quarters, a Woodchoppers Ball. Although the usual wild game was not to be had for this year's function it still proved to be a most enjoyable event. The Forestry Club also sponsors an Awards banquet each spring quarter at which time Department and Alumni awards are presented.

The arrival of spring quarter will, hopefully, find the Forestry Club housed in the new addition to the Forestry Building. The new wing will provide badly needed new facilities for offices, laboratories and classrooms. From this new location the Forestry Club will continue in its role as a promoter of fellowship and understanding among students and faculty in the field of Forestry.

## THIRD PLACE



### THE CLEMSON UNIVERSITY FORESTRY CLUB

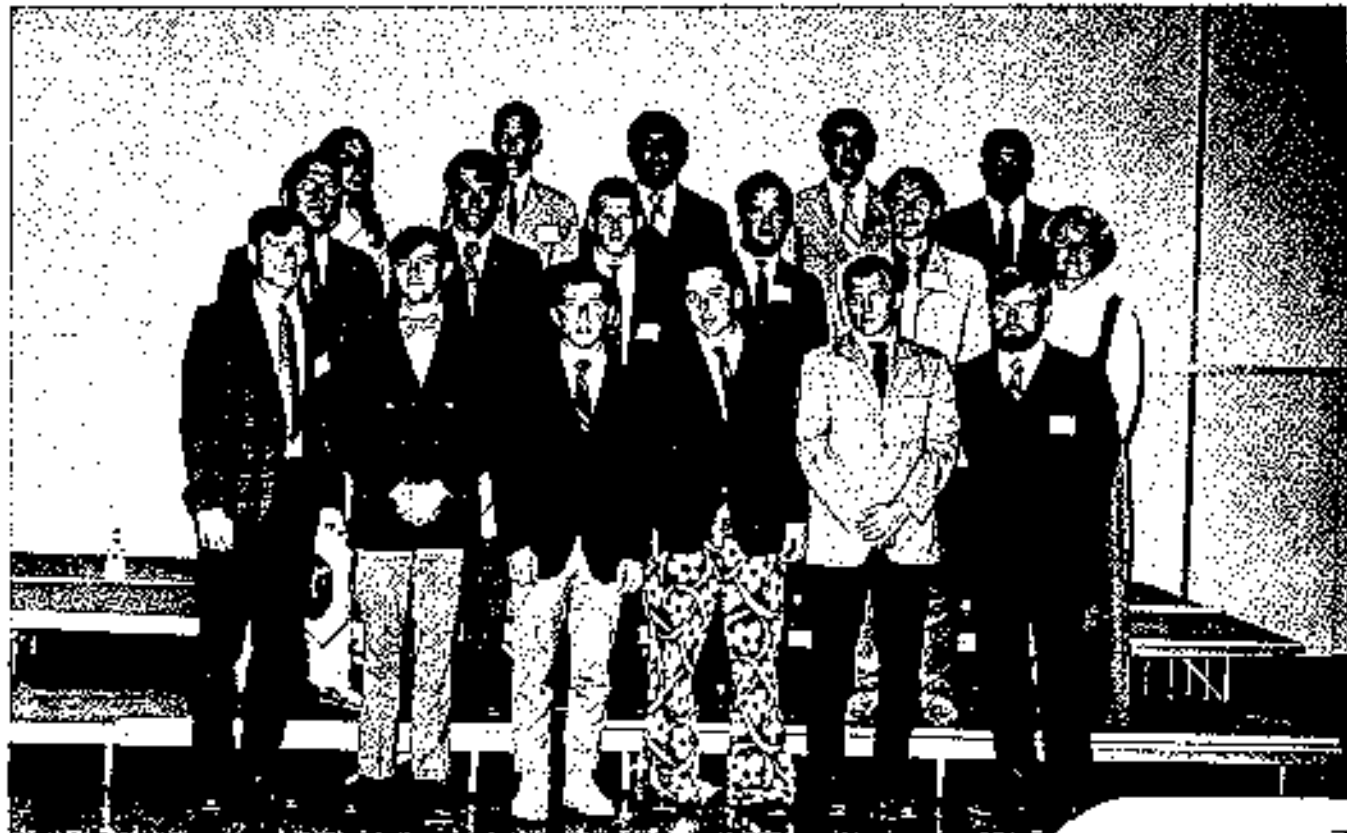
BY WILLIAM R. THOMAS, Secretary

The Clemson University Forestry Club was organized in 1957 by the Class of '59. The club, which originally started with seven members, today has an enrollment of fifty members. The club's purpose is to bring about a closer relationship among the forestry students and the faculty of the University and to promote interest in and to advance knowledge of forestry in the University.

The 35 active members of the club enjoy the bimonthly meetings which consist of business sessions and special programs. The members also enjoy intramural sports, initiation of new members, and cookouts. The club raises funds for its activities by cutting and selling firewood and pulpwood. Some funds have been raised by the sale of small fire extinguishers.

The building of the Forestry Club display for Homecoming is the main activity of the fall semester. The spring semester is high-lighted by the local conclave and the trip to the Annual A.S.F.C. Conclave.

The club offers its members fellowship, leadership training, and recreation. It is one of the most active professional clubs on campus.



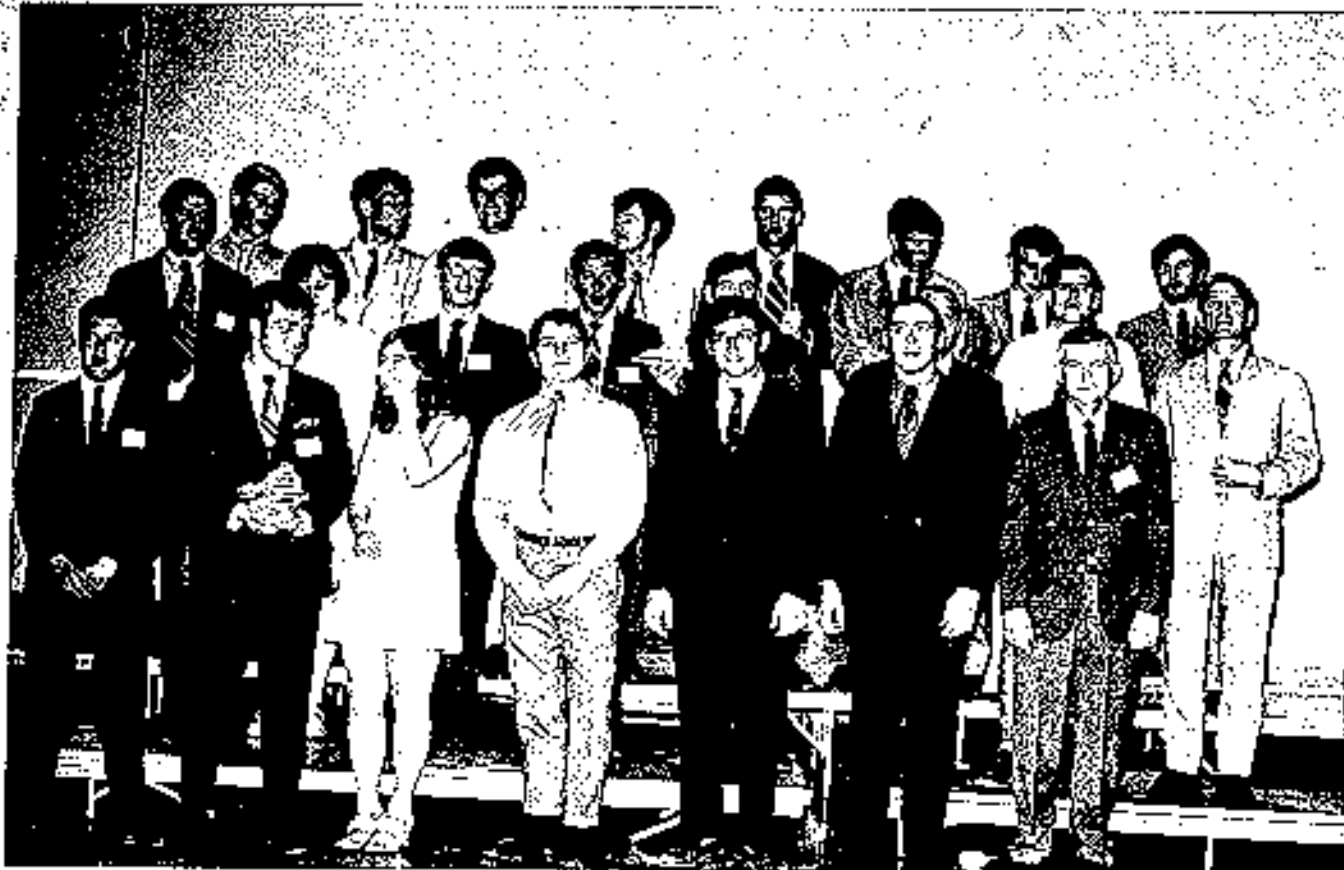
## **THE UNIVERSITY OF FLORIDA FORESTRY CLUB**

This year the Forestry Club at the University of Florida has twenty-two active members. This year the club officers are: E. Gary Hollifield, President; Beverly Underwood, Vice President; C. J. Swoffard, Secretary; and James H. Keen, Treasurer.

Each year the club holds its annual pulpwood cut and sale. This year we were successful with thirty-one cords cut giving us a net return of over \$600.

Our annual field day was held the latter part of winter quarter. At this activity, faculty, students and their wives came out to participate in and enjoy watching the events. Prizes, which were donated by different companies and local businesses were awarded to the winners of the different events. In all, seventeen prizes were awarded, ranging from Coleman stoves to prisms.

The senior awards banquet, which is the club's final activity for the year, will be held on May 29. At this affair, all forestry students who have earned an award or scholarship will be recognized.



## UNIVERSITY OF GEORGIA FORESTRY CLUB

The School of Forest Resources at the University of Georgia has an active and dedicated Forestry Club. The Club was formed in 1914 and produces the first annual in 1916. During the school year 1925-1926 two significant events occurred. First the "Forestry Cabin" was built and also the first female, Jane Oakly, was admitted to the school. I'm sure these events weren't related. Miss Oakly's stay at the school was short. She never graduated because she met and married a rich young lad from New York.

The activities of the club are many and varied. The Club has organized a student-faculty gripe session, about grades; coordinated the Miss School of Forest Resource Beauty Pageant; and will hold the annual Field day and Lumberjack's Ball. Also the Club will participate in a school wide student-faculty social field day.

The Club elects a president, vice president, treasurer and a secretary. The president appoints people to head the various committees that must be formed to carry out the Club's activities. The Club also elects two representatives to the Ag Hill Council. Our advisors are nominated and elected by the Club. This year the Club has two very fine and enthusiastic advisors.

This year the Club has been actively involved in the University's Intramural sports program. We did fairly well in football and made a good showing in basketball. We are now in the process of organizing a baseball team for the Spring quarter baseball games.

Because of the informal nature of the Club and the good lines of communication within the school, the Forestry Club of the University of Georgia has something to offer every student in the forestry school.



## THE MISSISSIPPI STATE UNIVERSITY FORESTRY CLUB

The Mississippi State University Forestry Club gets off to a blazing start each semester with the biannual Smoker. With free tigers and refreshments each freshman and transfer student is introduced to the activities and objectives of the Club. This first meeting of each semester provides an opportunity for the new students to meet the faculty and club members. One of the highlights of each year is Field Day. Spirits (competitive) run high as members compete for the honor of representing the Club in the Conclave.

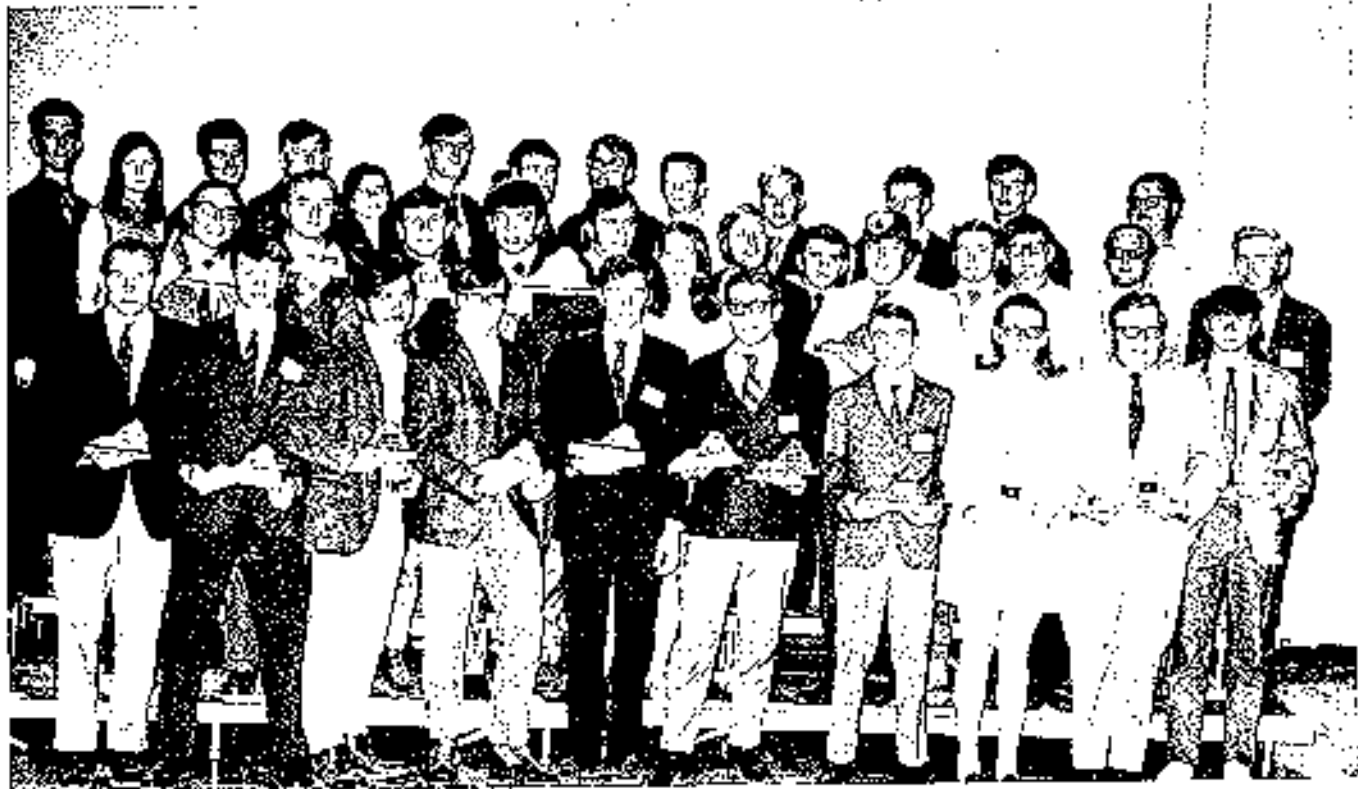
To create interest and develop forestry skills, the Forestry Department donated 20 acres of a slash pine plantation to the Club. The management of this plantation rests solely in the hands of the Club. This has allowed many of the students to gain first-hand experience in land management, experience that can never be gained in the

classroom. The first harvest cut was made this fall, and this area was regenerated during the winter. Club members have provided the labor and leadership for such cultural practices as TSI and controlled burning.

Funds to sponsor Club activities and our upcoming trip to V.P.I. were raised by cutting and selling firewood and pulpwood.

The topics for this year's meetings have centered around career opportunities in the various phases of forestry. These informative discussions have provided guidance for Club members to choose their forestry option.

The upcoming year offers much opportunity for the Forestry Club. We plan to initiate a membership drive and create renewed participation.



## THE NORTH CAROLINA STATE FORESTRY CLUB

In its 41st year of service to the School of Forest Resources, the Forestry Club at North Carolina State University continues to grow in membership and offer opportunities for leadership development, fellowship and practical forest management.

This year's roll boasts 73 active members and a growing number of interested faculty.

Since expansion is the key to any successful organization or business, the Forestry Club has increased its efforts in money-making projects, programs, membership and social events.

During the fall semester the Club earned nearly \$2000.00 from the sale of pulpwood and tree work in the city of Raleigh.

The Forestry Club Rolleo, similar to the Conclave but competition is between classes, drew a crowd of over 100 spectators, wide press-coverage and fervent competition.

Homecoming centered our efforts on construction of a float which captured first place in the Organization Division.

Club participation in "Open House" for the Department of Forest Resources and the Department of Agriculture and Life Sciences was very good at its display entitled "Careers 2001".

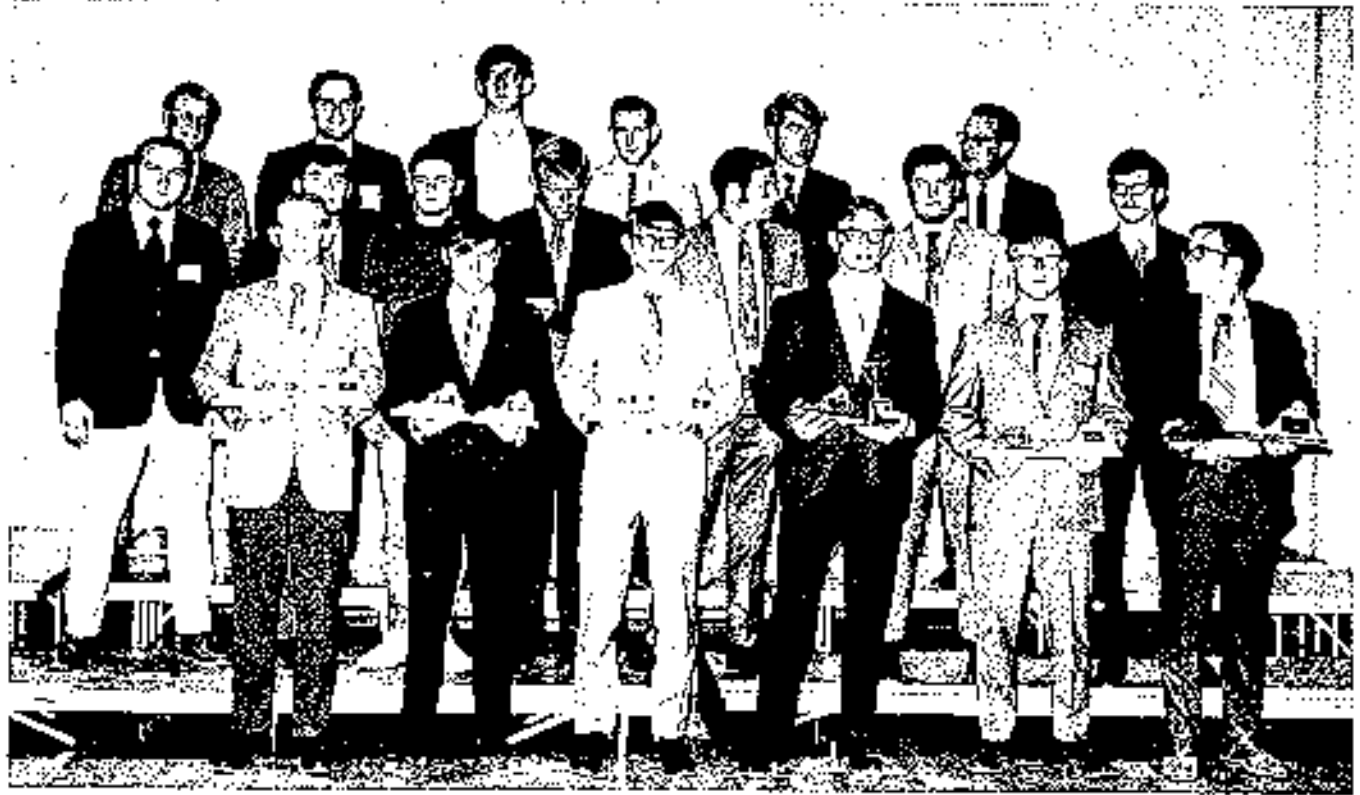
Meeting programs have included topics from forestry in Alaska and Yugoslavia to environmental pollution and forestry employment.

The Forestry Club has instituted a Big Brother program to aid the incoming Freshmen and increase membership.

With the construction of a new Forestry building, an Archives of the Forestry Club is being prepared for the new meeting room library.

The "Loggers Brawl", our largest social event, is in the planning along with a curriculum change program.

The North Carolina State Forestry Club owes its success to its members of which 15 are Xi Sigma Pi brothers, 30 hold student memberships in the Society of American Foresters and a supporting faculty that never tires of contributing.



## THE OKLAHOMA STATE UNIVERSITY FORESTRY CLUB

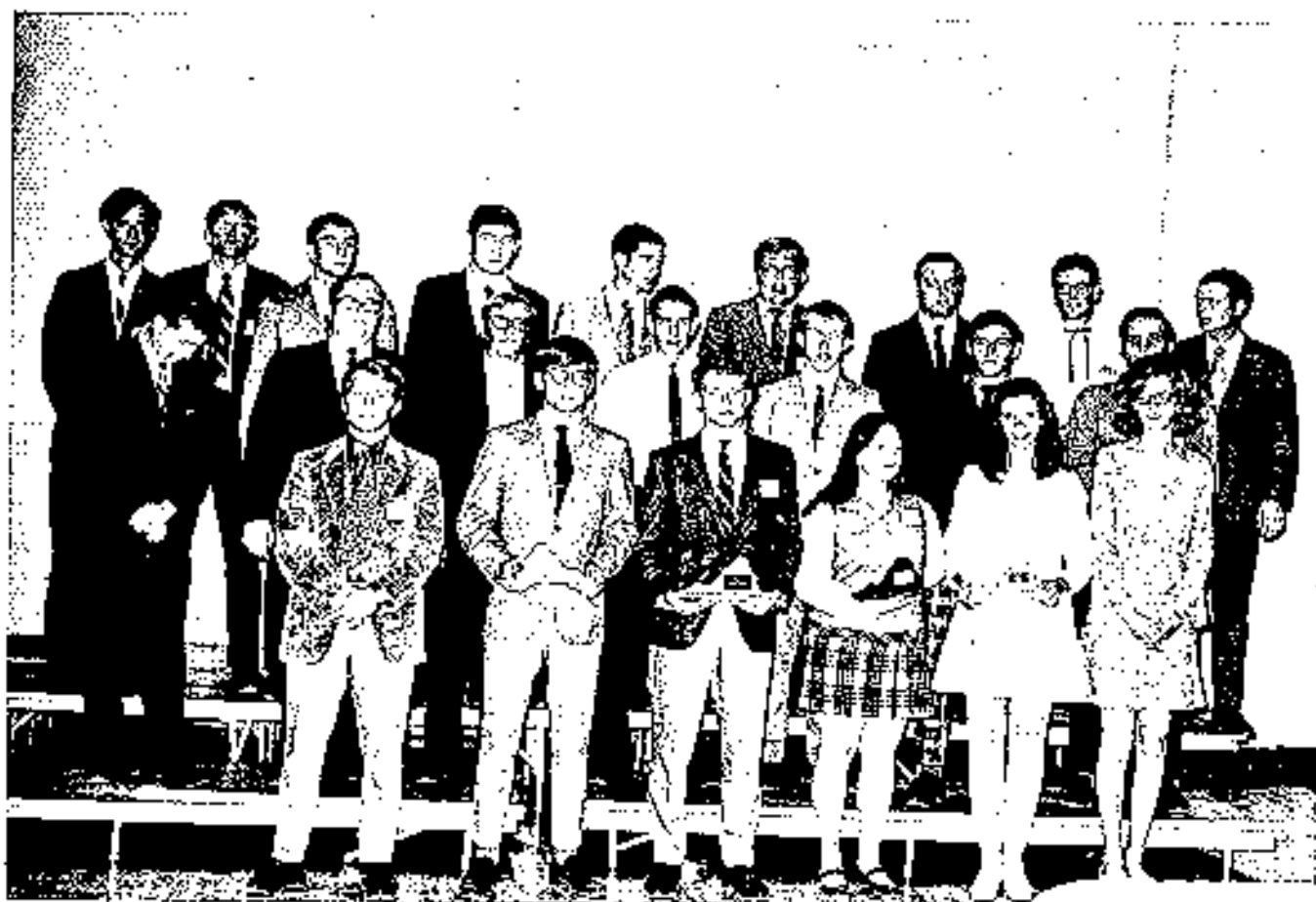
BY DWAYNE GLOVER

The O. S. U. Forestry Club is now in its 23rd year as a club. Our club advisor this year is Dr. Lamar Teate, a native of Georgia.

We received the award for being the outstanding club in the school of Agriculture for the year 68-69. We were very happy to receive this award and have hopes of repeating this performance in the 69-70 term. In the fall we held our annual "Log Jam", at which we had a fine barbecue, and the members of the forestry club got to personally meet the queen candidates. Denise Schaefer will represent our club this year and compete in the Aggie Princess contest.

The club purchased a new chain saw this year. We will use it to cut firewood, which the club will sell during the winter. The money derived from these sales will help sponsor club activities.

The club began preparing for the Conclave during the second semester. Four run-offs were held in March and April, with the 23rd annual "Field Day" held April 12. This was to determine who would represent the club at the Conclave.



## **SYLVAN CLUB**

This has been a good and active year for the Sylvan Club at Stephen F. Austin State University. Our membership this year is over eighty members and this has enabled us to raise adequate funds for our activities through work projects. Our work projects consist of weekend work of trimming trees, clearing land and doing other work related to forestry.

The Sylvan Club sponsors many annual events such as a forestry field day, a homecoming parade float, a demonstration of conclave events for the school and a spring banquet. The Sylvan Club also awards a summer camp scholarship to an outstanding member.

The Club now publishes a bi-weekly newsletter, the "Knothole", which is distributed to all forestry majors. Also the annual yearbook, "The Texas Tally", will soon be ready for publication.



## THE UNIVERSITY OF TENNESSEE FORESTRY CLUB

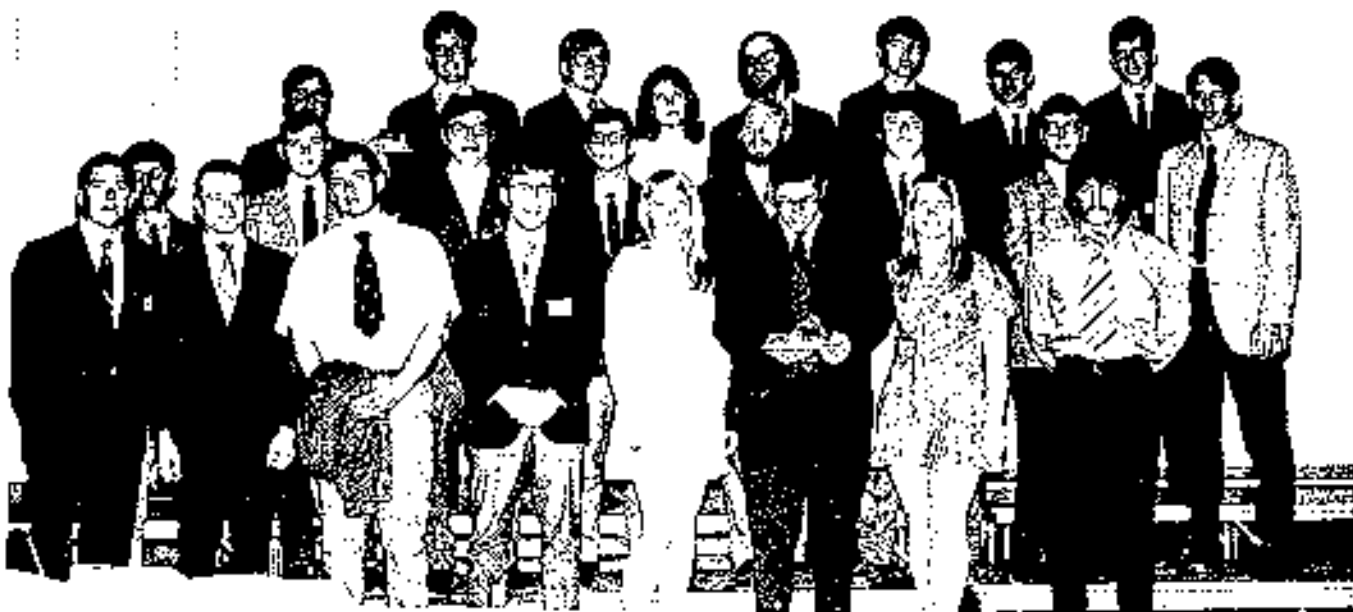
The University of Tennessee Forestry Club has seen another year of growth and service to the department of forestry and the entire university community. The club has formed a forum for students and faculty in forestry to express their ideas in professional as well as general topics.

Under the guidance of our advisors Dr. John W. Barrett and Professor Ed Buckner the club has begun a project to help improve the esthetic values of Fort Loudon Lake. The club has become more deeply concerned with the problem of damage to our environment. Our project has been to clean up the banks of the lake and to prepare the site and plant seedlings of White pine and aborvitae.

The club was indeed proud recently to join in with the department in celebration of our accreditation by the Society of American Foresters. We were also justly proud in having our department head, Dr. John W. Barrett, elected to the council of the S. A. F.

The continuing program of the club has included participation in the intramural programs of the University. This program has enabled more of our members who are off-campus residents to get involved in the recreational activities of the college community.

The highlight activities of the club for the spring are the Conclave and our annual Spring Awards Banquet. The banquet is held to recognize individuals in their achievements in scholastic, service, and social endeavors.



## V. P. I. FORESTRY CLUB

The role of the forester in the coming decade will be more varied and critical than ever before, and the Forestry Club of V. P. I. is encouraging development of a wider understanding through a program of activities that broadens the university's view of the forester and the foresters' view of the university.

There was a tremendous response from the whole university, and the Division of Forestry and Wildlife Sciences in particular, to an Alpha Zeta sponsored symposium on environmental Quality. In cooperation with the Student Wildlife Society Chapter, a Departmental Symposium on the forester's role in solving the environmental crisis was held.

In anticipation of hosting the 13th Annual A. S. F. C. Conclave we have worked and planned to sponsor the best yet. Association officers and committee chairman have been busy since September. Our team hopes to better last year's 4th place finish.

Many of the usual Forestry Club activities were carried out this year with great success. Our ornamental seedling sales went to the \$2,500.00 mark for the first time and seedling planting jobs were plentiful. The second Annual Timber Beast Dance was a social, even if not financial, success. First place honors in the homecoming float competition went to the Forestry Club. Work is well under way on the Departmental yearbook, *The Virginia Tech Forester*.

To expand the forestry students' knowledge of his professional society, a joint meeting with the Appalachian Section of the Society of American Foresters will be held in May with Mr. Hardin R. Graycock, Jr., Executive Vice President of the Society slated to speak.

By bringing members in contact with each other, the faculty, the profession, and the university, the Forestry Club is serving both its members and the university.

# MINUTES OF THE BUSINESS MEETING OF THE THIRTEENTH ANNUAL CONCLAVE OF THE A.S.F.C.

**APRIL 18, 1970**

**BLACKSBURG, VIRGINIA**

At 5:00 p.m., Saturday, April 18, 1970, the meeting of team captains was called to order by A. S. F. C. President Ken Hodge.

President Ken Hodge then called for discussion on the Conclave Contest Rules. A discussion then opened on ties in the events. A motion was made that run-offs for the first three places be held and in ties below this point the total points of all persons tied would be added and divided equally among these persons. The motion was seconded and carried by a unanimous vote. There was no further discussion on the general statement of rules.

Next the discussion turned to problems in events:

**TIMBER ESTIMATION** - A motion was made that a volume table be sent to the schools one week prior to Conclave. It was seconded and passed unanimously.

**POLE CLASSIFICATION** - A discussion was brought up on the dollar value used in pole classification. A motion was made that the words "based on highest dollar value" be left out of Sec. II, E.3, and Sec. II, E.5. be changed to "The . . . list of estimated pole classes shall have the greatest number of correct pole classes." The motion was seconded and further discussion continued. The motion failed and the rule remains the same.

**WOOD TECHNOLOGY** - A motion was made to change the reference book to Vol. I Textbook of Wood Technology by Panskin, DeZecuro, and Brown (1964). The motion was seconded and accepted.

**CHAIN THROWING** - A discussion on the running of two chain throwing courses at the same time. It was recommended that it be continued in the future.

**AXE THROWING AND KNIFE THROWING** - A motion was made that separate targets should be made for axe throwing and knife throwing. Then there was discussion on the species used for practice and for the contest. There was an amendment that both practice and contest targets be of the same species. The amended motion was accepted and seconded then passed.

**POLE CLIMBING** - It was moved that the DBH of the tree used for pole climbing be measured while it is still on the stump. It was seconded and passed unanimously.

**BOW SAWING** - A motion was made that the bow sawing can't be a distance of 2.5 feet from the bottom to the ground. There was a second and was unanimously passed.

**LOG ROLLING** - There was discussion on the penalties applied for touching the log. A motion was made that there be a penalty for any accidental contact of 2 seconds and 5 seconds for deliberate contact to be determined by the judges. It was seconded and passed.

**CROSSCUT SAWING** - It was moved that the size be reduced from twelve inches to ten inches. It was seconded and unanimously passed.

**LOG CHOPPING** - There was a motion made that the cant may not be moved from position set in by the host school. There was a second and it was passed unanimously. It was moved that the chopping cant be reduced from twelve to ten inches. It was seconded and passed.

**BAIT CASTING** - A motion was made that a practice target be supplied by the host school. There was a second and it passed. It was moved that a new target be of the same dimensions and made of wood and a soft clay. The center would be made of the clay and the outer portion of circular wood. The clay would be rolled after each contestant. It was seconded and passed.

**LOG BIRLING** - It was moved that complete round robin be run and these would be run-offs for both winners and losers brackets. It was seconded and passed. A motion was made that it would be left up to the home club upon whether to use single cleft birling shoes. It was seconded and the motion failed to pass.

There was then discussion on having a student protest group instead of a faculty. There was a motion made on having a faculty protest group to handle all protests. It was seconded and passed. The meeting was then adjourned.

After the awards banquet there was another short meeting.

There was discussion on the two trial wildlife events run this year. There was a motion that mammal and bird identification be run again on a trial basis for the next year.

The meeting was then adjourned.

# CONSTITUTION OF THE ASSOCIATION OF SOUTHERN FORESTRY CLUBS

## Article I. Name.

The name of the organization shall be the Association of Southern Forestry Clubs.

## Article II. Objectives

- A. To benefit the forestry clubs of the various southern schools by an interchange of ideas and stimulation of good fellowship among the club members.
- B. To establish and maintain:
  1. Unity of purpose and action within and among the southern forestry clubs.
  2. A high standard of professional ethics.
  3. Closer cooperation and relationship between students and professional foresters.
- C. To hold an annual conclave

## Article III. Membership.

- A. Qualifications.
  1. Any forestry club of a university or college of Alabama, Arkansas, Florida, Georgia, Kentucky, Louisiana, Mississippi, North Carolina, Oklahoma, South Carolina, Tennessee, Texas, Virginia, or West Virginia granting a baccalaureate degree in forestry, or equivalent, with a major of forestry, or a higher degree in forestry, shall be eligible for voting membership in this association upon a majority approval of a petition submitted to the voting member clubs; or by application by representation at the Annual Conclave.
  2. Charter Members: Louisiana State University, University of Florida, Stephen F. Austin State College, Mississippi State University, Oklahoma State University, University of the South, Arkansas A & M College, Auburn University, University of Georgia, North Carolina State College, and Clemson Agriculture College.
  3. Any Forestry Club of a senior university or college within the state listed in Part 1 of this section not granting a baccalaureate degree in forestry, shall be eligible for associate membership upon a majority approval of a petition submitted to the voting member clubs.
- B. Privileges.

Member (each club) and entitled to one vote and full participation in all conclave activities.
- C. Dues.
  1. The Annual dues shall be one hundred (\$100) dollars for each member club. Entering clubs shall pay a reduced rate to be set by the Association.
  2. The dues shall be used to pay for correspondence, publications, and other association expenses of the host club and any excess funds may be the host club's.
  3. The dues for the year will be paid to the host school by January 1, preceding the Conclave.

## Article IV. Officers.

- A. The officers of the association shall be:
  1. President - elected from and by the host club.
  2. Vice-President - one elected from any by each member club.
  3. Secretary - elected from and by the host club.
  4. Treasurer - elected from and by the host club.
  5. Editor - elected from and by the host club.
- B. The Duties of the Officers.
  1. The duties of the President shall be:
    - a. To preside at all meetings of the association.
    - b. To appoint committees.
    - c. To be responsible for submitting an officers report to the accumulative files upon the completion of ASFC Conclave.
    - d. To be responsible for obtaining reports from each of his committees and officer heads of the host club.

- e. To perform all other duties necessary.
2. The duties of the Vice-President shall be:
  - a. To act as a representative of his club.
  - b. To notify the president of his election.
  - c. To complete a report of the activities of the association, and be responsible for submitting materials to the host club for annual publication.
  - d. To be responsible for submitting to member clubs publications within his club and maintaining an accumulative file of ASFC correspondence.
3. The duties of the Secretary shall be:
  - a. To keep the minutes of all meetings of the association and to conduct all correspondence relative to the business of the association.
  - b. To submit an officer's report for the accumulative files, completion of the ASFC Conclave.
4. The duties of the Treasurer shall be:
  - a. To receive and have custody of all money paid to the association.
  - b. To keep a careful record of all receipts and expenditures.
  - c. To prepare a financial report for publication in the annual issue of "THE SOUTHERN FORESTER."
  - d. To be responsible for the collection of dues.
5. The duties of the Editor shall be:
  - a. To gather and edit all material for the annual publication, "THE SOUTHERN FORESTER."
  - b. To see that the provisions of Article VII are carried out.

#### C. Tenure of Office.

Officers are to hold office until the next Annual Conclave with the exception of the editor, who will serve until the publication is distributed.

#### D. Election of Officers.

1. The President, Secretary, Treasurer, and Editor of the Association shall be elected by the host club at their first club meeting following the Conclave.
2. Vice Presidents of the Association shall be elected by their respective clubs at their first meeting following the Conclave.

### Article V. Meetings.

#### A. Time of meetings.

1. Meetings shall be during the annual spring Conclave on the last night of the Conclave.
2. The exact time of the meetings is to the discretion of the host club.

#### B. Election of Host Club.

1. The host club shall be selected from bids submitted by member clubs at each annual meeting by a roll call majority vote two years in advance.
2. In case of tie, the president shall cast the deciding vote.
3. No club shall be host more than once in three years.
4. If a previously elected host notifies the members of the ASFC, by October 1 of the year before it is to hold the conclave, that it cannot hold the conclave, the president shall solicit bids from the members and then send a ballot to each member club to be voted on in writing.
5. The host club shall be alternated from east to west whenever possible.

#### C. Files.

1. Accumulative files shall be maintained by the host club and shall include all member reports and correspondence.
2. Each file shall contain a copy of the ASFC Constitution.

### Article VI. Amendments

The constitution may be amended or revised by a two-thirds vote of the voting member clubs.

### Article VII. Publications.

- A. Title. The title of the publication shall be "THE SOUTHERN FORESTER."
- B. The constitution shall be published annually in the publication of "THE SOUTHERN FORESTER."

- C. The past host club shall publish the ASFC periodical within one month after the Annual Conclave.
- D. Securing items for publications.
  - 1. The articles shall be edited by the member club and submitted to the host club.
  - 2. Article to be printed in the current issue must be in the hands of the publishing editor not later than the time of the Annual Conclave.
- E. Distribution.  
Each conclave contestant will receive one (1) copy of "THE SOUTHERN FORESTER." A minimum of twenty (20) will be sent to participating member clubs.
- F. Proceeding of the Conclave.  
Proceedings of each Annual Conclave, including minutes of the business meetings, will be published by the past host club in the annual publication.

## Article VIII. Contests.

- A. Competitive events will be held at each Annual Conclave.
- B. There will be 15 standard competitive contests at each Annual Conclave.
  - 1. Standard events:
    - a. Dendrology
    - b. Compass and pacing
    - c. Timber estimation
    - d. D. B. H. estimation
    - e. Pole classification
    - f. Wood technology
    - g. Chain throwing
    - h. Axe throwing
    - i. Knife throwing
    - j. Pole climbing
    - k. Bow sawing
    - l. Log rolling
    - m. Cross-cut sawing
    - n. Log chopping
    - o. Bait casting
  - 2. Scoring will be based on the number of schools participating in the Conclave. First place winners in field events will be awarded a number of points equal to the total number of schools participating. Second place winners receive 1 less point than the total number of participating schools, third place winners will receive 2 less points than the total number of participating schools, and so on with each succeeding participant who satisfactorily completes the event receiving one or more points. First place winners in technical events will be awarded a number of points equal to the number of participating schools multiplied by 1.5. Second place winners will receive 1.5 points less than the total number of points awarded first place winners, third place winners will receive 3 points less than the total number of points awarded first place winners, and so on with each succeeding participant who satisfactorily completes the event receiving 1.5 or more points.
- C. In addition to the 15 standard events established in Section B, there may be a maximum of five (5) contests at the discretion of the host club, provided that these contests be specified with rules and explanations at the preceding Annual Conclave. Requests for omission of any standard contests will be made at the preceding Annual Conclave with a two-thirds (2/3) majority vote necessary for approval.
- D. The standard set of rules will be made and approved by the voting members of the ASFC.
- E. Selection of judges of all contests will be left to the discretion of the host club except in the event the host club participates; then judging will not be done by members of the host club.
- F. Only students presently enrolled in a school or department of forestry will be eligible to enter ASFC events. In the case the University of Florida and the University of the South, freshman and sophomore students presently enrolled and who have declared an intention of enrolling in the forestry department or school at the beginning of their junior year will also be eligible for participation.
- G. The contestant must meet the same requirements as are specified for individual participation in school athletics. The contestant must be an undergraduate student and he must meet his own school's requirements both scholastically and in credit for athletic participation.
- H. In the event that the Conclave delegation or spectators from any member school intentionally or otherwise interfere with the progress of any event in the Conclave, that delegation shall forfeit the rights to score any points in that event.

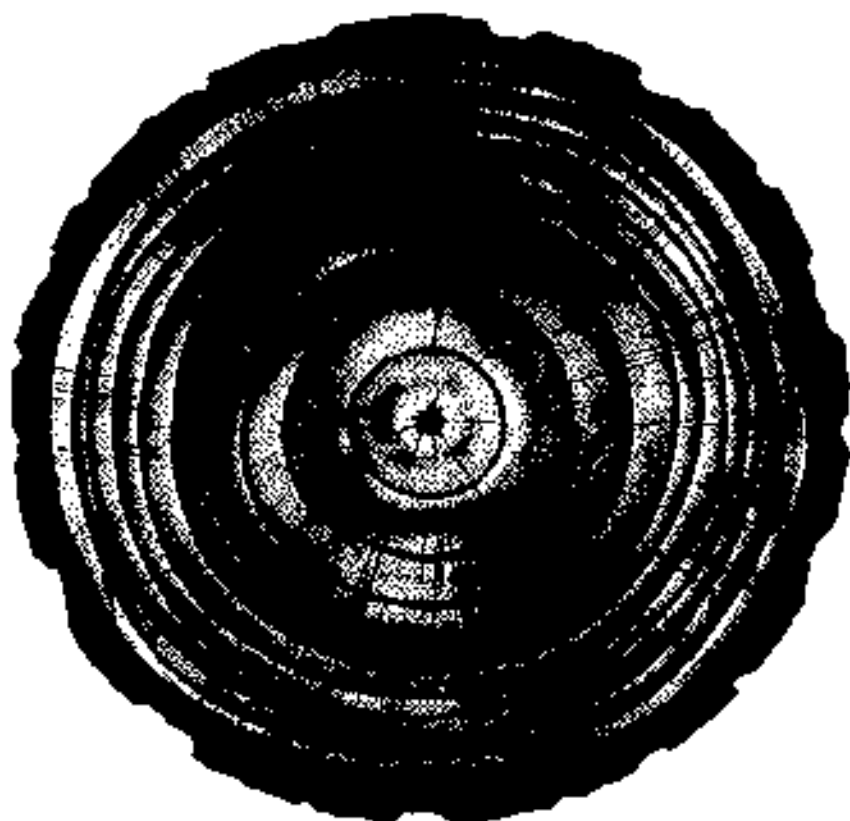
- I. VPI is hereby considered a member of the ASFC by vote taken on May 4, 1963.
- J. A table of random members will be used to choose order of team's participation in each event. This order will be sent to each participating school before the Conclave.
- K. Contest protests must be filed with a committee of staff members within fifteen (15) minutes of the individual infraction. The protest committee shall be composed of three (3) staff members of schools within the Association. They shall be appointed by the host school and cannot serve as judges in any event.
- L. Contestants in the log chopping event must wear hard-toed footwear; the use of shin guards is left to the individual's discretion.
- M. Tennessee is hereby considered a member of the ASFC by unanimous vote taken on April 8, 1967.
- N. The University of the South is hereby no longer considered a member of the ASFC after the submission of a letter of resignation on April 12, 1969.



"It was like this."



"Did you hear that?!"



**Like trees, most companies show their age.  
So how does a growing company keep young?**

With people. Skilled and trained.

Imaginative and motivated.

The best people we can get.

People who want to make Westvaco the best name in paper.

Who want to make Westvaco the best company to do business with.

That's one way to do it.

Come to think of it, it's about the only way.

**Westvaco**  
Covington, Va.

# Keep your eye on MF

EARTH MOVING & EXCAVATING & TRENCHING & MATERIALS HANDLING &

FORESTRY & GROUND MAINTENANCE



## MF INDUSTRIAL & CONSTRUCTION MACHINERY

MASSEY-FERGUSON INC., AKRON, OHIO 44309

### See Your MF

### Construction Machinery

### Distributor

## F & F EQUIPMENT COMPANY

NORLINA ROAD, HENDERSON, N.C. 27536

(919) 438-5133

# **"WHAT YOU NEED WHEN YOU NEED IT"**

MORE THAN JUST A SLOGAN, "WHAT YOU  
NEED, WHEN YOU NEED IT" EXPRESSES  
FORESTRY SUPPLIERS GENUINE INTEREST  
IN SERVING YOU. EACH OF US WANTS TO  
PLEASE YOU. WE SAY "AT FORESTRY  
SUPPLIERS YOU GET MORE THAN JUST  
MERCHANDISE, YOU GET SOME OF EACH  
OF US".

**Forestry Suppliers, Inc.**

295 W. RANKIN ST. P. O. BOX 8397 JACKSON, MISSISSIPPI 39202



## How to take a Kenworth off the road.

When you see a big Kenworth coming down the road, you know you're looking at a lot of truck. Just how much truck can be illustrated by what Kenworths can do when highway weight and size restrictions are not a factor.

Taking the basic KW conventional design, we've built trucks that haul huge loads over tough roads at remarkably high speeds. Would you believe 200,000 pounds at 40 mph? We've done it. We learned the ins and outs of building off-highway trucks because we're a Pacific Northwest company who cut our teeth building logging trucks. We had to learn how to build vehicles that

could pull big loads fast over tough terrain.

If you come to us and ask for an off-highway or an on/off highway truck, we know how to set it up. We can go right to the shelf and get special springs, special frames, special parts in a number of areas. But the amazing thing is this: about 90% of the parts in an on-highway Kenworth are more than adequate for the roughest off-highway use. We really don't have to change very much, because Kenworths are rugged to begin with. And that's nice to know even if you're just hauling on a turnpike.



## Kenworth

Home Office: Seattle, Washington 98124

